

Euphonium $\text{B}\flat$
(Tuba $\text{E}\flat$ / $\text{BB}\flat$)

Smidighed i alle Doriske tonearter

Flexibility in all Dorian keys

Udgivet 2003 af
(Edited 2003 by)
Klaus Bjerre

Hveranden dag: Stød •

Mellemelejet

Every other day: Tongued

The mid range

1



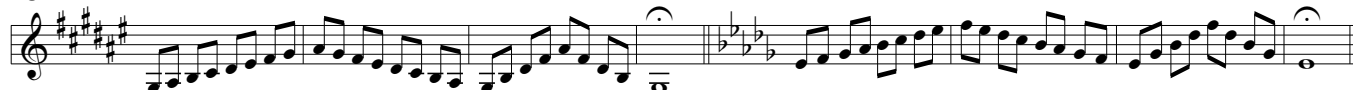
9



17



25



33



41



Hveranden dag: Legato (

49 Every other day: Legato



55



61

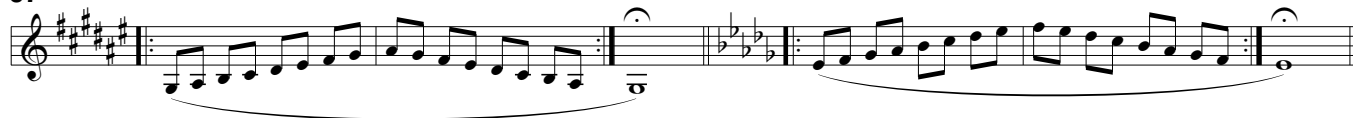


1

Euphonium $\text{B}\flat$
(Tuba $\text{E}\flat$ / $\text{BB}\flat$)

Smidighed i alle Doriske tonearter Flexibility in all Dorian keys

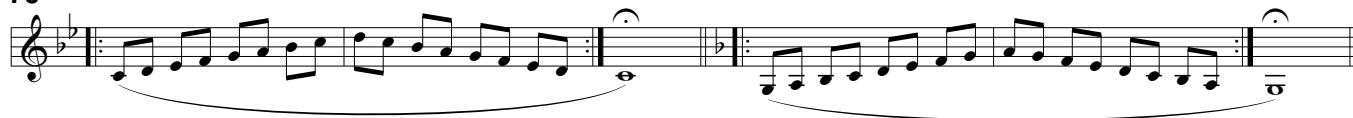
67



73



79



Højden

The high range

Hveranden dag: Legato (
Every other day: Legato

85



91



97



103



109



115



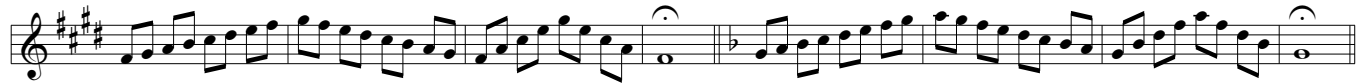
Euphonium $\text{B}\flat$
(Tuba $\text{E}\flat$ / $\text{BB}\flat$)

Smidighed i alle Doriske tonearter

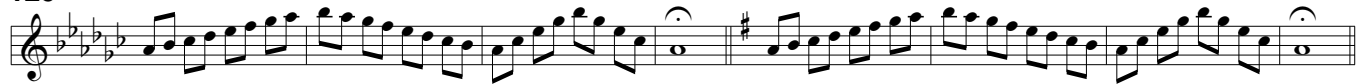
Flexibility in all Dorian keys

Hveranden dag: Stød •

121 Every other day: Tongued



129



137



145



153



161



Dybden

Hveranden dag: Stød •

The low range

169 Every other day: Tongued



177



185



Euphonium $\text{B}\flat$

(Tuba $\text{E}\flat$ / $\text{BB}\flat$)

Smidighed i alle Doriske tonearter

Flexibility in all Dorian keys

193

Exercise 193 consists of two staves of music. The first staff is in the key of D Dorian (one sharp, one flat) and the second staff is in the key of B Dorian (two sharps, two flats). Both staves feature eighth-note patterns with a dotted quarter note at the end of each phrase. A dashed line with '8vb' below it indicates the tuba part.

201

Exercise 201 consists of two staves of music. The first staff is in the key of A Dorian (no sharps or flats) and the second staff is in the key of F Dorian (two flats). Both staves feature eighth-note patterns with a dotted quarter note at the end of each phrase. A dashed line with '8vb' below it indicates the tuba part.

209

Exercise 209 consists of two staves of music. The first staff is in the key of G Dorian (one sharp) and the second staff is in the key of C Dorian (no sharps or flats). Both staves feature eighth-note patterns with a dotted quarter note at the end of each phrase. A dashed line with '8vb' below it indicates the tuba part.

Hveranden dag: Legato (

Every other day: Legato

217

Exercise 217 consists of two staves of music. The first staff is in the key of B Dorian (two sharps, two flats) and the second staff is in the key of D Dorian (one sharp, one flat). Both staves feature legato eighth-note patterns with a dotted quarter note at the end of each phrase. A dashed line with '8vb' below it indicates the tuba part.

223

Exercise 223 consists of two staves of music. The first staff is in the key of A Dorian (no sharps or flats) and the second staff is in the key of F Dorian (two flats). Both staves feature legato eighth-note patterns with a dotted quarter note at the end of each phrase. A dashed line with '8vb' below it indicates the tuba part.

229

Exercise 229 consists of two staves of music. The first staff is in the key of G Dorian (one sharp) and the second staff is in the key of C Dorian (no sharps or flats). Both staves feature legato eighth-note patterns with a dotted quarter note at the end of each phrase. A dashed line with '8vb' below it indicates the tuba part.

235

Exercise 235 consists of two staves of music. The first staff is in the key of D Dorian (one sharp, one flat) and the second staff is in the key of B Dorian (two sharps, two flats). Both staves feature legato eighth-note patterns with a dotted quarter note at the end of each phrase. A dashed line with '8vb' below it indicates the tuba part.

241

Exercise 241 consists of two staves of music. The first staff is in the key of A Dorian (no sharps or flats) and the second staff is in the key of F Dorian (two flats). Both staves feature legato eighth-note patterns with a dotted quarter note at the end of each phrase. A dashed line with '8vb' below it indicates the tuba part.

247

Exercise 247 consists of two staves of music. The first staff is in the key of G Dorian (one sharp) and the second staff is in the key of C Dorian (no sharps or flats). Both staves feature legato eighth-note patterns with a dotted quarter note at the end of each phrase. A dashed line with '8vb' below it indicates the tuba part.