

**Hveranden dag: Stød •**

Every other day: Tongued

1



9



17



25



33



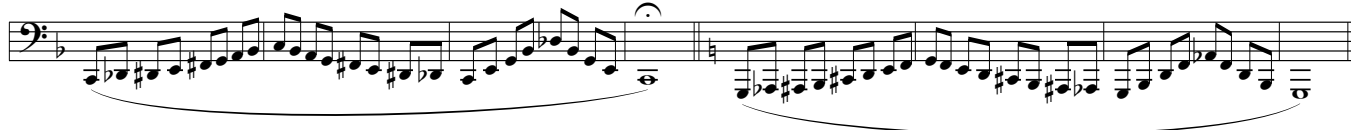
41



**Hveranden dag: Legato (**

Every other day: Legato

49



57



65



1

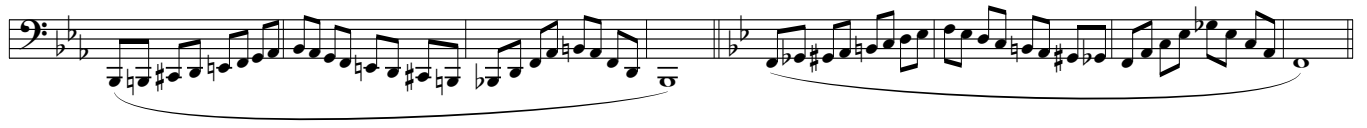
73



81



89



### Højden

Hveranden dag: Legato (

The high range

97

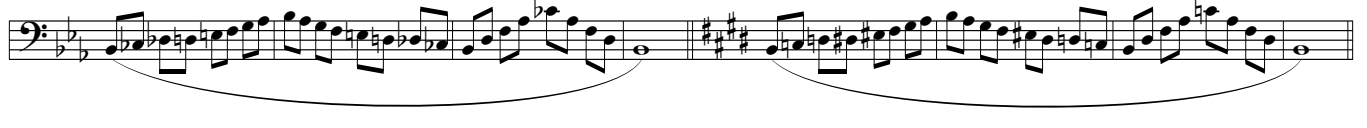
Every other day: Legato



105



113



121



129



137



**Hveranden dag: Stød •**

145 Every other day: Tongued



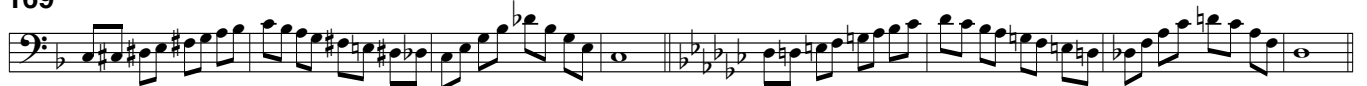
153



161



169



177



185



**Dybden**

**Hveranden dag: Stød •**

**The low range**

193 Every other day: Tongued



201



209



217

Exercise 217: Two measures of a dominant 8-note scale in bass clef. The first measure is in G major (one sharp) and the second is in G minor (two flats). A dashed line below the staff is labeled "8vb".

225

Exercise 225: Two measures of a dominant 8-note scale in bass clef. The first measure is in D major (two sharps) and the second is in D minor (two flats). A dashed line below the staff is labeled "8vb".

233

Exercise 233: Two measures of a dominant 8-note scale in bass clef. The first measure is in A major (three sharps) and the second is in A minor (no sharps or flats). A dashed line below the staff is labeled "8vb".

**Hveranden dag: Legato (**

241

**Every other day: Legato**

Exercise 241: Two measures of a legato dominant 8-note scale in bass clef. The first measure is in Bb major (two flats) and the second is in Bb minor (three flats). A slur is placed under the notes.

249

Exercise 249: Two measures of a legato dominant 8-note scale in bass clef. The first measure is in Eb major (three flats) and the second is in Eb minor (four flats). A slur is placed under the notes.

257

Exercise 257: Two measures of a legato dominant 8-note scale in bass clef. The first measure is in Ab major (four flats) and the second is in Ab minor (five flats). A slur is placed under the notes.

265

Exercise 265: Two measures of a legato dominant 8-note scale in bass clef. The first measure is in E major (four sharps) and the second is in E minor (no sharps or flats). A slur is placed under the notes. A dashed line below the staff is labeled "8vb".

273

Exercise 273: Two measures of a legato dominant 8-note scale in bass clef. The first measure is in B major (two sharps) and the second is in B minor (two flats). A slur is placed under the notes. A dashed line below the staff is labeled "8vb".

281

Exercise 281: Two measures of a legato dominant 8-note scale in bass clef. The first measure is in F# major (three sharps) and the second is in F# minor (three sharps). A slur is placed under the notes. A dashed line below the staff is labeled "8vb".