

Hveranden dag: Stød •

Every other day: Tongued

1



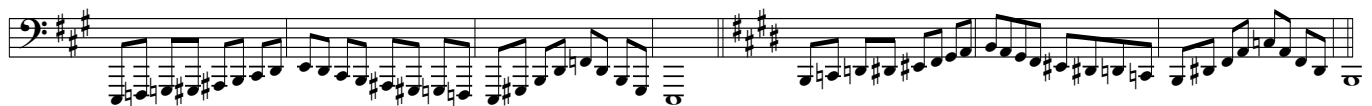
9



17



25



33



41



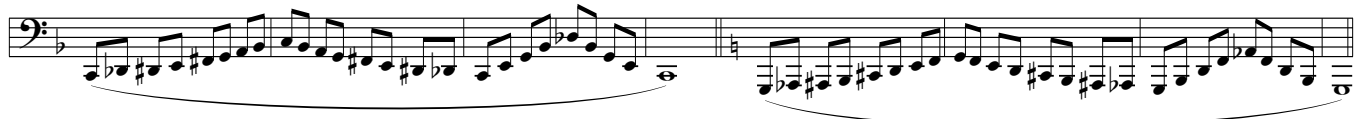
Hveranden dag: Legato (

Every other day: Legato

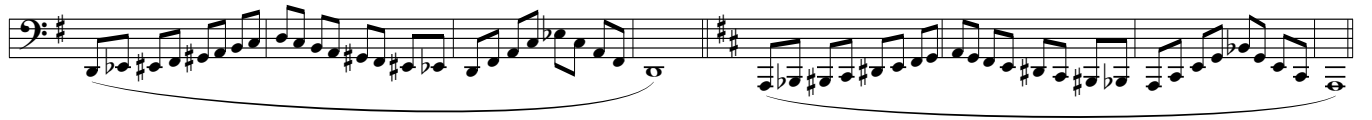
49



57



65



1

73



81



89



Højden

Hveranden dag: Legato (

The high range

97

Every other day: Legato



105



113



121



129

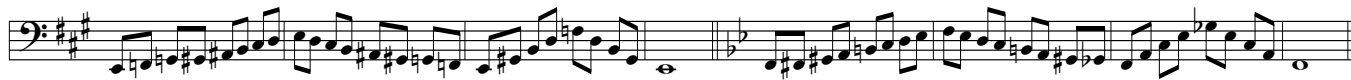


137



Hveranden dag: Stød •

145 Every other day: Tongued



153



161



169



177



185



Dybden

Hveranden dag: Stød •

The low range

193 Every other day: Tongued



201



209



217

Exercise 217: Two measures of a dominant 8-note scale in bass clef. The first measure is in B-flat major (two flats), and the second is in B-flat minor (three flats). A dashed line below the staff indicates the sub-octave (8vb).

225

Exercise 225: Two measures of a dominant 8-note scale in bass clef. The first measure is in B major (two sharps), and the second is in B minor (two sharps). A dashed line below the staff indicates the sub-octave (8vb).

233

Exercise 233: Two measures of a dominant 8-note scale in bass clef. The first measure is in B-flat major (two flats), and the second is in B-flat minor (three flats). A dashed line below the staff indicates the sub-octave (8vb).

Hveranden dag: Legato (

241

Every other day: Legato

Exercise 241: Two measures of a legato dominant 8-note scale in bass clef. The first measure is in B-flat major (two flats), and the second is in B-flat minor (three flats). A slur is placed under the notes.

249

Exercise 249: Two measures of a legato dominant 8-note scale in bass clef. The first measure is in B-flat major (two flats), and the second is in B-flat minor (three flats). A slur is placed under the notes.

257

Exercise 257: Two measures of a legato dominant 8-note scale in bass clef. The first measure is in B major (two sharps), and the second is in B minor (two sharps). A slur is placed under the notes.

265

Exercise 265: Two measures of a legato dominant 8-note scale in bass clef. The first measure is in B-flat major (two flats), and the second is in B-flat minor (three flats). A slur is placed under the notes, and a dashed line below indicates the sub-octave (8vb).

273

Exercise 273: Two measures of a legato dominant 8-note scale in bass clef. The first measure is in B major (two sharps), and the second is in B minor (two sharps). A slur is placed under the notes, and a dashed line below indicates the sub-octave (8vb).

281

Exercise 281: Two measures of a legato dominant 8-note scale in bass clef. The first measure is in B-flat major (two flats), and the second is in B-flat minor (three flats). A slur is placed under the notes, and a dashed line below indicates the sub-octave (8vb).