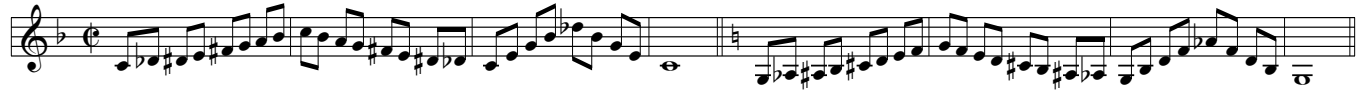


Hveranden dag: Stød •

Every other day: Tongued

1



9



17



25



33



41



Hveranden dag: Legato (

Every other day: Legato

49



57



65



Euphonium $B\flat$

(Tuba $E\flat$ / $BB\flat$)

Smidighed i alle dominante 8-tone skalaer

Flexibility in all dominant 8-note scales

73



81



89



Højden

Hveranden dag: Legato (

The high range

97

Every other day: Legato



105



113



121



129



137



Euphonium $\text{B}\flat$
(Tuba $\text{E}\flat$ / $\text{BB}\flat$)

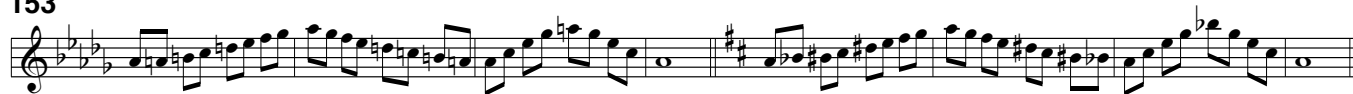
Smidighed i alle dominante 8-tone skalaer
Flexibility in all dominant 8-note scales

Hveranden dag: Stød •

145 Every other day: Tongued



153



161



169



177



185



Dybden

Hveranden dag: Stød •

The low range

193 Every other day: Tongued



201



209



Euphonium $B\flat$

(Tuba $E\flat$ / $BB\flat$)

Smidighed i alle dominante 8-tone skalaer

Flexibility in all dominant 8-note scales

217

Exercise 217: Two 8-note scales in treble clef. The first scale is in G major (one sharp), and the second is in G minor (two flats). A dashed line below the staff is labeled '8vb'.

225

Exercise 225: Two 8-note scales in treble clef. The first scale is in D major (two sharps), and the second is in D minor (two flats). A dashed line below the staff is labeled '8vb'.

233

Exercise 233: Two 8-note scales in treble clef. The first scale is in A major (three sharps), and the second is in A minor (three flats). A dashed line below the staff is labeled '8vb'.

Hveranden dag: Legato (

241 Every other day: Legato

Exercise 241: Two 8-note scales in treble clef. The first scale is in Bb major (two flats), and the second is in Bb minor (three flats). A slur is placed under both scales.

249

Exercise 249: Two 8-note scales in treble clef. The first scale is in Eb major (three flats), and the second is in Eb minor (four flats). A slur is placed under both scales.

257

Exercise 257: Two 8-note scales in treble clef. The first scale is in Ab major (four flats), and the second is in Ab minor (five flats). A slur is placed under both scales.

265

Exercise 265: Two 8-note scales in treble clef. The first scale is in E major (four sharps), and the second is in E minor (three flats). A dashed line below the staff is labeled '8vb'.

273

Exercise 273: Two 8-note scales in treble clef. The first scale is in B major (two sharps), and the second is in B minor (two flats). A dashed line below the staff is labeled '8vb'.

281

Exercise 281: Two 8-note scales in treble clef. The first scale is in F# major (three sharps), and the second is in F# minor (three sharps). A dashed line below the staff is labeled '8vb'.