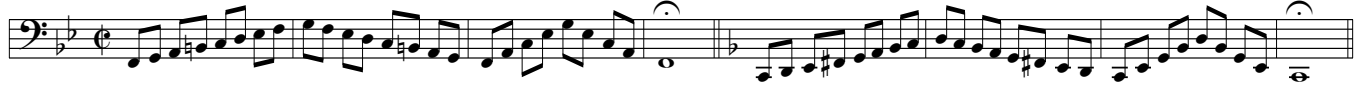


Hveranden dag: Stød •

Mellemløjet

1 Every other day: Tongued

The mid range



9



17



25



33



41



Hveranden dag: Legato (

49 Every other day: Legato



55



61



Tuba in F

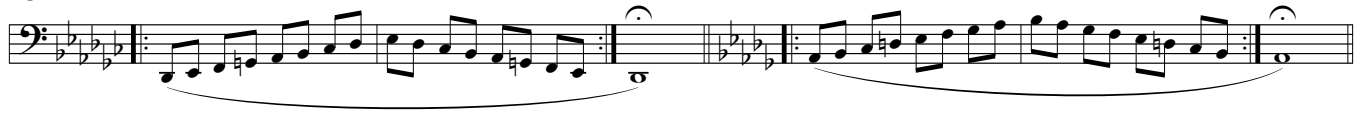
Smidighed i alle Lydisk dominante tonearter

Flexibility in all Lydian Dominant keys

67



73



79



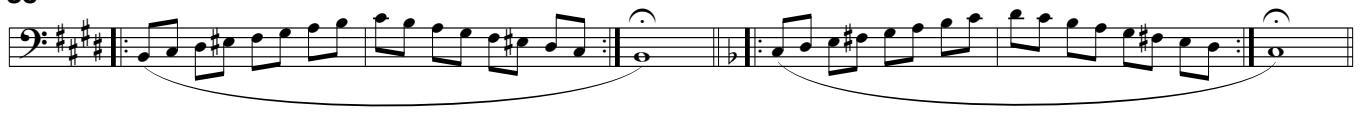
Højden

The high range

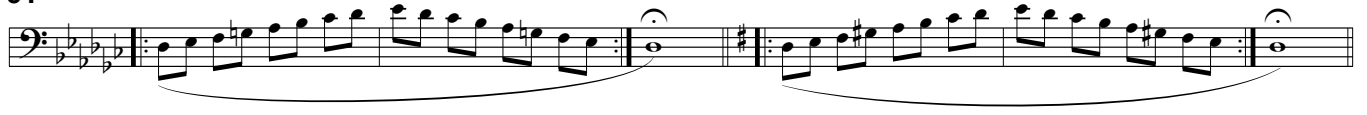
Hveranden dag: Legato (

Every other day: Legato

85



91



97



103



109



115





Tuba in F

Smidighed i alle Lydisk dominante tonearter

Flexibility in all Lydian Dominant keys

193

Exercise 193: Two measures of music in bass clef. The first measure is in G major (one sharp) and the second is in G minor (two flats). A dashed line labeled '8vb' indicates the sub-octave position.

201

Exercise 201: Two measures of music in bass clef. The first measure is in G major (one sharp) and the second is in G minor (two flats). A dashed line labeled '8vb' indicates the sub-octave position.

209

Exercise 209: Two measures of music in bass clef. The first measure is in G minor (two flats) and the second is in G major (one sharp). A dashed line labeled '8vb' indicates the sub-octave position.

Hveranden dag: Legato (

Every other day: Legato

217

Exercise 217: Two measures of music in bass clef. The first measure is in G minor (two flats) and the second is in G major (one sharp). A slur is placed over the notes in both measures.

223

Exercise 223: Two measures of music in bass clef. The first measure is in G minor (two flats) and the second is in G major (one sharp). A slur is placed over the notes in both measures.

229

Exercise 229: Two measures of music in bass clef. The first measure is in G major (one sharp) and the second is in G minor (two flats). A slur is placed over the notes in both measures.

235

Exercise 235: Two measures of music in bass clef. The first measure is in G major (one sharp) and the second is in G minor (two flats). A slur is placed over the notes in both measures. A dashed line labeled '8vb' indicates the sub-octave position.

241

Exercise 241: Two measures of music in bass clef. The first measure is in G major (one sharp) and the second is in G minor (two flats). A slur is placed over the notes in both measures. A dashed line labeled '8vb' indicates the sub-octave position.

247

Exercise 247: Two measures of music in bass clef. The first measure is in G minor (two flats) and the second is in G major (one sharp). A slur is placed over the notes in both measures. A dashed line labeled '8vb' indicates the sub-octave position.