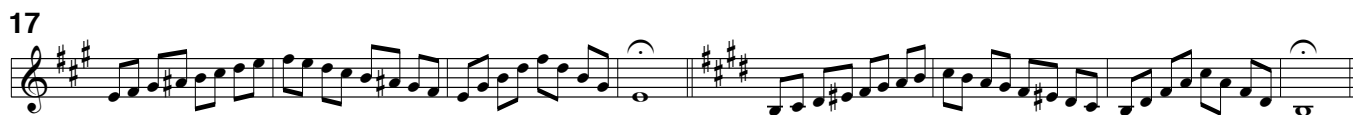
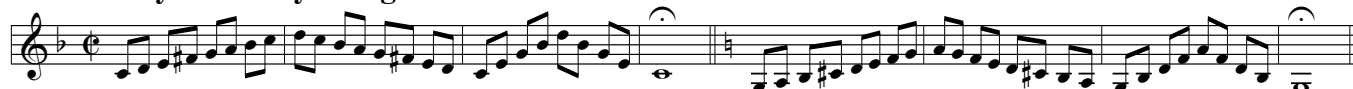


Hveranden dag: Stød •

Mellemløjet

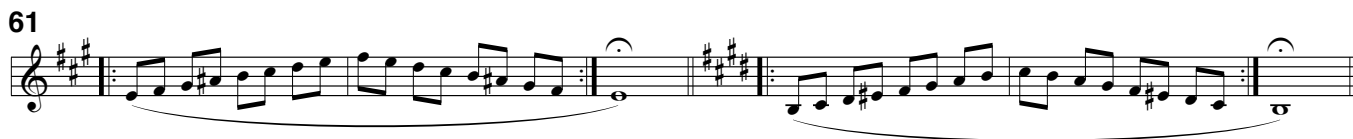
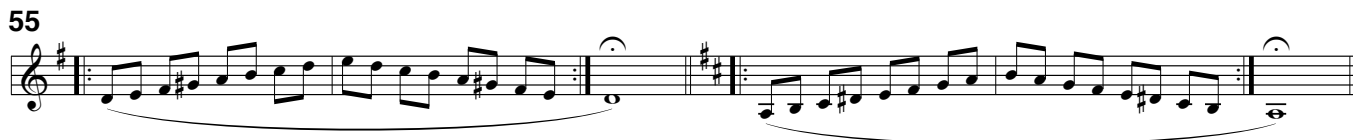
1 Every other day: Tongued

The mid range



Hveranden dag: Legato (

49 Every other day: Legato



Euphonium $B\flat$
(Tuba $E\flat$ / $BB\flat$)

Smidighed i alle Lydisk dominante tonearter

Flexibility in all Lydian Dominant keys

67



73



79



Højden

The high range

Hveranden dag: Legato (
Every other day: Legato

85



91



97



103



109



115



Euphonium $\text{B}\flat$

(Tuba $\text{E}\flat$ / $\text{BB}\flat$)

Smidighed i alle Lydisk dominante tonearter

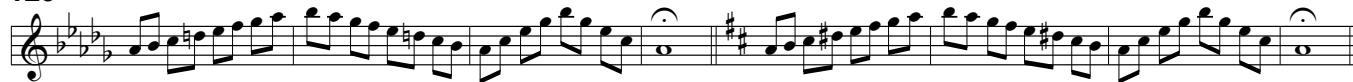
Flexibility in all Lydian Dominant keys

Hveranden dag: Stød •

121 Every other day: Tongued



129



137



145



153



161



Dybden

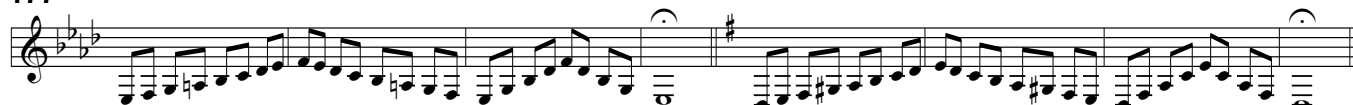
Hveranden dag: Stød •

The low range

169 Every other day: Tongued



177



185



Euphonium $\text{B}\flat$
(Tuba $\text{E}\flat$ / $\text{BB}\flat$)

Smidighed i alle Lydisk dominante tonearter

Flexibility in all Lydian Dominant keys

193

Exercise 193 consists of two measures of eighth-note runs. The first measure is in the key of $\text{F}\sharp$ Lydian dominant, and the second measure is in the key of $\text{B}\flat$ Lydian dominant. A dashed line labeled 8^{vb} indicates the tuba range.

201

Exercise 201 consists of two measures of eighth-note runs. The first measure is in the key of $\text{C}\sharp$ Lydian dominant, and the second measure is in the key of $\text{B}\flat$ Lydian dominant. A dashed line labeled 8^{vb} indicates the tuba range.

209

Exercise 209 consists of two measures of eighth-note runs. The first measure is in the key of $\text{F}\sharp$ Lydian dominant, and the second measure is in the key of $\text{C}\sharp$ Lydian dominant. A dashed line labeled 8^{vb} indicates the tuba range.

Hveranden dag: Legato (

Every other day: Legato

217

Exercise 217 consists of two measures of eighth-note runs. The first measure is in the key of $\text{B}\flat$ Lydian dominant, and the second measure is in the key of $\text{F}\sharp$ Lydian dominant. A slur is placed over the notes, and a dashed line labeled 8^{vb} indicates the tuba range.

223

Exercise 223 consists of two measures of eighth-note runs. The first measure is in the key of $\text{B}\flat$ Lydian dominant, and the second measure is in the key of $\text{C}\sharp$ Lydian dominant. A slur is placed over the notes, and a dashed line labeled 8^{vb} indicates the tuba range.

229

Exercise 229 consists of two measures of eighth-note runs. The first measure is in the key of $\text{B}\flat$ Lydian dominant, and the second measure is in the key of $\text{B}\flat$ Lydian dominant. A slur is placed over the notes, and a dashed line labeled 8^{vb} indicates the tuba range.

235

Exercise 235 consists of two measures of eighth-note runs. The first measure is in the key of $\text{F}\sharp$ Lydian dominant, and the second measure is in the key of $\text{B}\flat$ Lydian dominant. A slur is placed over the notes, and a dashed line labeled 8^{vb} indicates the tuba range.

241

Exercise 241 consists of two measures of eighth-note runs. The first measure is in the key of $\text{C}\sharp$ Lydian dominant, and the second measure is in the key of $\text{B}\flat$ Lydian dominant. A slur is placed over the notes, and a dashed line labeled 8^{vb} indicates the tuba range.

247

Exercise 247 consists of two measures of eighth-note runs. The first measure is in the key of $\text{C}\sharp$ Lydian dominant, and the second measure is in the key of $\text{F}\sharp$ Lydian dominant. A slur is placed over the notes, and a dashed line labeled 8^{vb} indicates the tuba range.