

Hveranden dag: Stød •

Mellemelejet

1 Every other day: Tongued

The mid range

Measure 1: Bass clef, 4/4 time. Key signature: one flat (B-flat major). Lydian mode (B-flat, C, D, E-flat, F, G, A). The notation shows a sequence of eighth notes: B-flat, C, D, E-flat, F, G, A, B-flat, followed by a whole note B-flat.

9

Measure 9: Bass clef, 4/4 time. Key signature: no sharps or flats (C major). Lydian mode (C, D, E, F, G, A, B). The notation shows a sequence of eighth notes: C, D, E, F, G, A, B, C, followed by a whole note C.

17

Measure 17: Bass clef, 4/4 time. Key signature: two sharps (D major). Lydian mode (D, E, F, G, A, B, C). The notation shows a sequence of eighth notes: D, E, F, G, A, B, C, D, followed by a whole note D.

25

Measure 25: Bass clef, 4/4 time. Key signature: three flats (E-flat major). Lydian mode (E-flat, F, G, A, B, C, D). The notation shows a sequence of eighth notes: E-flat, F, G, A, B, C, D, E-flat, followed by a whole note E-flat.

33

Measure 33: Bass clef, 4/4 time. Key signature: two flats (F major). Lydian mode (F, G, A, B, C, D, E). The notation shows a sequence of eighth notes: F, G, A, B, C, D, E, F, followed by a whole note F.

41

Measure 41: Bass clef, 4/4 time. Key signature: one sharp (G major). Lydian mode (G, A, B, C, D, E, F). The notation shows a sequence of eighth notes: G, A, B, C, D, E, F, G, followed by a whole note G.

Hveranden dag: Legato (

49 Every other day: Legato

Measure 49: Bass clef, 4/4 time. Key signature: one flat (B-flat major). Lydian mode (B-flat, C, D, E-flat, F, G, A). The notation shows a sequence of eighth notes: B-flat, C, D, E-flat, F, G, A, B-flat, followed by a whole note B-flat. A slur is placed under the eighth notes.

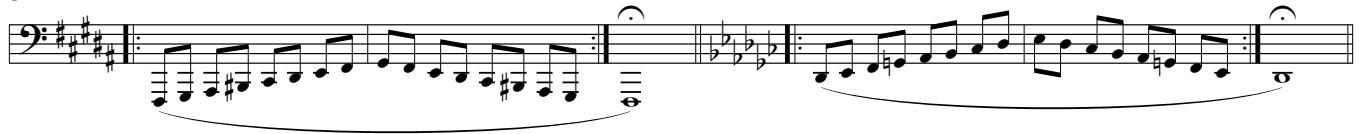
55

Measure 55: Bass clef, 4/4 time. Key signature: no sharps or flats (C major). Lydian mode (C, D, E, F, G, A, B). The notation shows a sequence of eighth notes: C, D, E, F, G, A, B, C, followed by a whole note C. A slur is placed under the eighth notes.

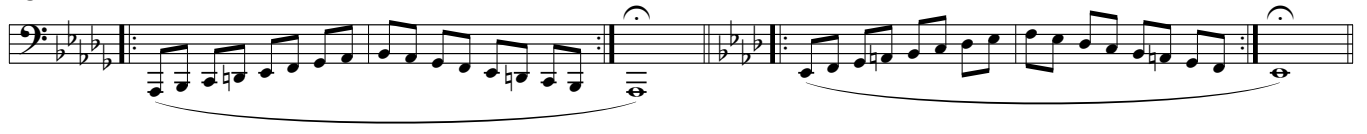
61

Measure 61: Bass clef, 4/4 time. Key signature: two sharps (D major). Lydian mode (D, E, F, G, A, B, C). The notation shows a sequence of eighth notes: D, E, F, G, A, B, C, D, followed by a whole note D. A slur is placed under the eighth notes.

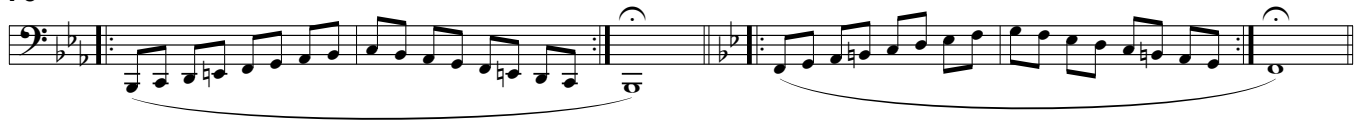
67



73



79

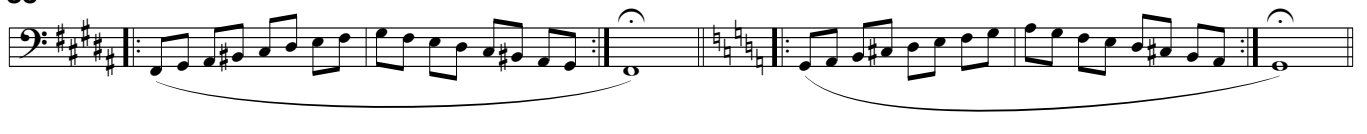


### Højden

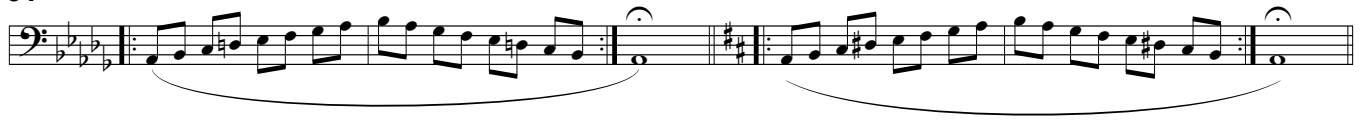
The high range

Hveranden dag: Legato (  
Every other day: Legato

85



91



97



103



109



115



**Hveranden dag: Stød •**

121 Every other day: Tongued



129



137



145



153



161



**Dybden**

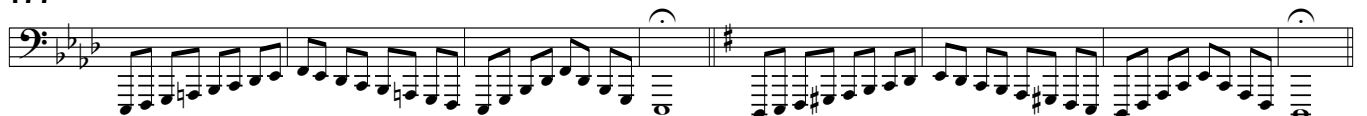
**Hveranden dag: Stød •**

**The low range**

169 Every other day: Tongued



177



185



193

Exercise 193 consists of two measures of music in bass clef. The first measure is in the key of C major (one sharp) and the second is in the key of F major (one flat). A dotted line below the staff is labeled '8vb'.

201

Exercise 201 consists of two measures of music in bass clef. The first measure is in the key of C major (one sharp) and the second is in the key of Bb major (two flats). A dotted line below the staff is labeled '8vb'.

209

Exercise 209 consists of two measures of music in bass clef. The first measure is in the key of C major (one sharp) and the second is in the key of D major (two sharps). A dotted line below the staff is labeled '8vb'.

Hveranden dag: Legato (

Every other day: Legato

217

Exercise 217 consists of two measures of music in bass clef. The first measure is in the key of Bb major (two flats) and the second is in the key of C major (one sharp). A slur is placed under the notes of both measures.

223

Exercise 223 consists of two measures of music in bass clef. The first measure is in the key of Bb major (two flats) and the second is in the key of D major (two sharps). A slur is placed under the notes of both measures.

229

Exercise 229 consists of two measures of music in bass clef. The first measure is in the key of Bb major (two flats) and the second is in the key of F major (one flat). A slur is placed under the notes of both measures.

235

Exercise 235 consists of two measures of music in bass clef. The first measure is in the key of C major (one sharp) and the second is in the key of Bb major (two flats). A dotted line below the staff is labeled '8vb'.

241

Exercise 241 consists of two measures of music in bass clef. The first measure is in the key of C major (one sharp) and the second is in the key of Bb major (two flats). A dotted line below the staff is labeled '8vb'.

247

Exercise 247 consists of two measures of music in bass clef. The first measure is in the key of C major (one sharp) and the second is in the key of D major (two sharps). A dotted line below the staff is labeled '8vb'.