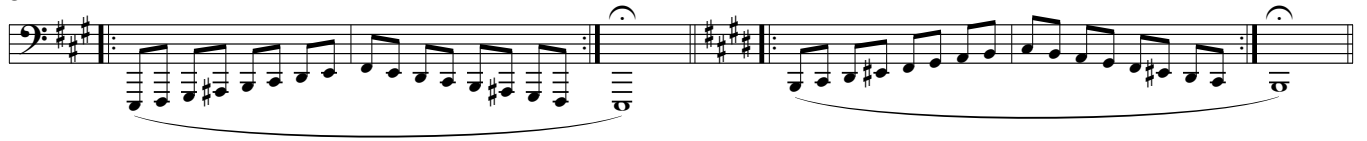
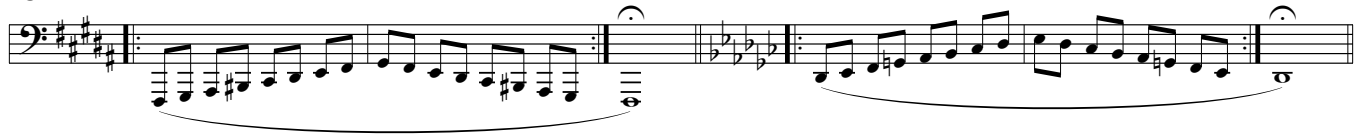


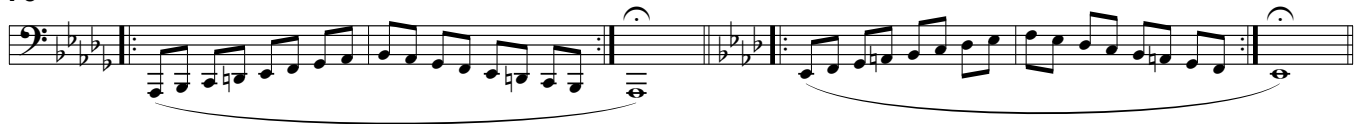
67



73



79



Højden

The high range

Hveranden dag: Legato (

Every other day: Legato

85



91



97



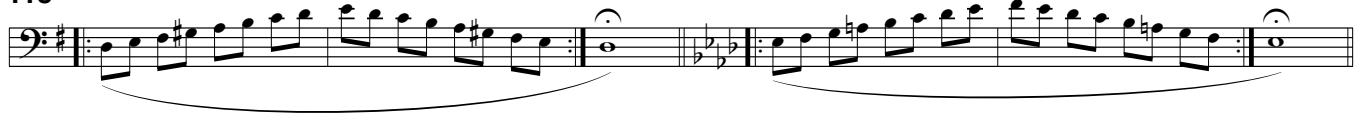
103



109



115



Hveranden dag: Stød •

121 Every other day: Tongued



129



137



145



153



161



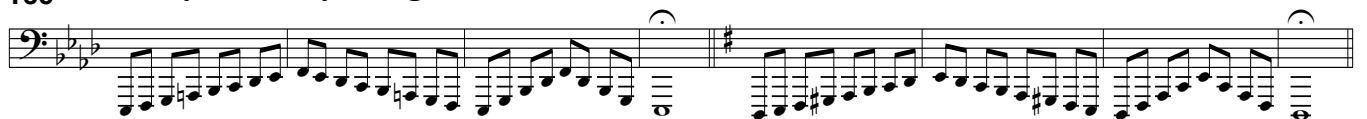
Dybden

Hveranden dag: Stød •

The low range

169

Every other day: Tongued



177



185



193

Exercise 193: Two measures of a bass line in Lydian dominant keys. The first measure is in G Lydian dominant (one sharp), and the second is in B Lydian dominant (two sharps). A dashed line labeled 'Sub' indicates the sub-octave line.

201

Exercise 201: Two measures of a bass line in Lydian dominant keys. The first measure is in D Lydian dominant (two sharps), and the second is in F Lydian dominant (one flat). A dashed line labeled 'Sub' indicates the sub-octave line.

209

Exercise 209: Two measures of a bass line in Lydian dominant keys. The first measure is in C Lydian dominant (no sharps or flats), and the second is in E Lydian dominant (three sharps). A dashed line labeled 'Sub' indicates the sub-octave line.

Hveranden dag: Legato (

Every other day: Legato

217

Exercise 217: Two measures of a legato bass line in Lydian dominant keys. The first measure is in B Lydian dominant (two sharps), and the second is in D Lydian dominant (two sharps). A slur is placed under the notes.

223

Exercise 223: Two measures of a legato bass line in Lydian dominant keys. The first measure is in G Lydian dominant (one sharp), and the second is in B Lydian dominant (two sharps). A slur is placed under the notes.

229

Exercise 229: Two measures of a legato bass line in Lydian dominant keys. The first measure is in D Lydian dominant (two sharps), and the second is in F Lydian dominant (one flat). A slur is placed under the notes.

235

Exercise 235: Two measures of a legato bass line in Lydian dominant keys. The first measure is in C Lydian dominant (no sharps or flats), and the second is in E Lydian dominant (three sharps). A dashed line labeled 'Sub' indicates the sub-octave line.

241

Exercise 241: Two measures of a legato bass line in Lydian dominant keys. The first measure is in G Lydian dominant (one sharp), and the second is in B Lydian dominant (two sharps). A dashed line labeled 'Sub' indicates the sub-octave line.

247

Exercise 247: Two measures of a legato bass line in Lydian dominant keys. The first measure is in D Lydian dominant (two sharps), and the second is in F Lydian dominant (one flat). A dashed line labeled 'Sub' indicates the sub-octave line.