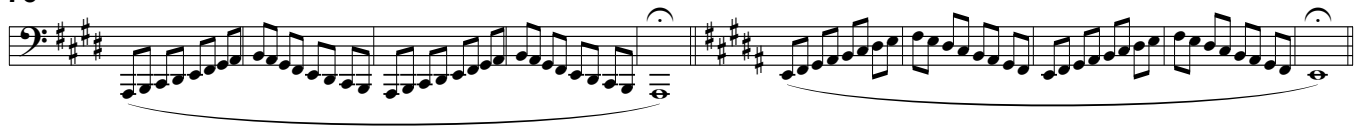


79



89



99



Højden

The high range

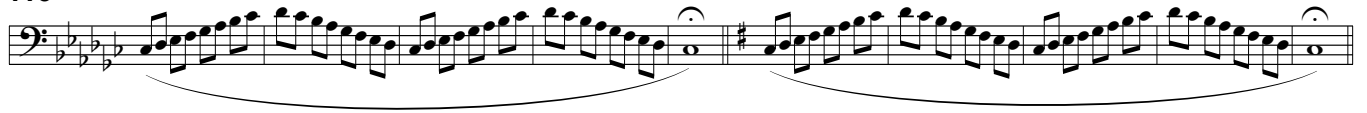
Hveranden dag: Legato (

Every other day: Legato

109



119



129



139



149

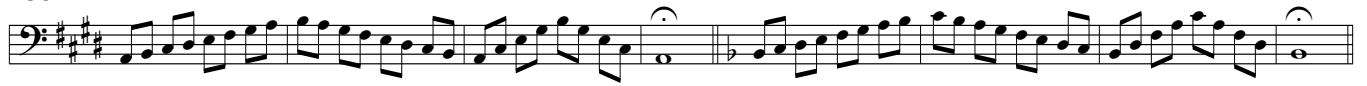


159

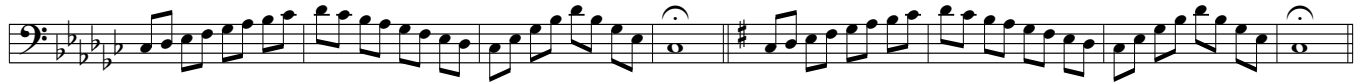


Hveranden dag: Stød •

169 Every other day: Tongued



177



185



193



201



209



Dybden

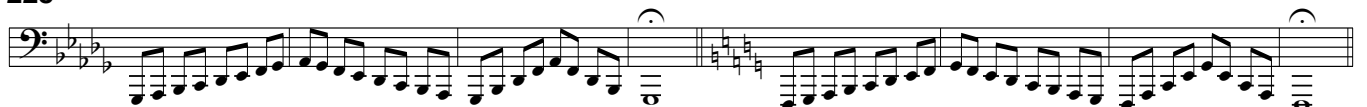
Hveranden dag: Stød •

The low range

217 Every other day: Tongued



225



233



241

Exercise 241 consists of two measures of eighth-note patterns. The first measure is in the key of E \flat Lydian (E \flat major with a natural F), and the second measure is in the key of B \flat Lydian (B \flat major with a natural C).

249

Exercise 249 consists of two measures of eighth-note patterns. The first measure is in the key of E \flat Lydian, and the second measure is in the key of B \flat Lydian. A dashed line labeled '8 \flat ' is positioned below the second measure.

257

Exercise 257 consists of two measures of eighth-note patterns. The first measure is in the key of B \flat Lydian, and the second measure is in the key of E \sharp Lydian (E \sharp major with a natural F \sharp). Dashed lines labeled '8 \flat ' are positioned below both measures.

Hveranden dag: Legato (

Every other day: Legato

265

Exercise 265 consists of two measures of eighth-note patterns. The first measure is in the key of B \flat Lydian, and the second measure is in the key of E \sharp Lydian. Both measures are marked with a slur.

275

Exercise 275 consists of two measures of eighth-note patterns. The first measure is in the key of B \flat Lydian, and the second measure is in the key of E \sharp Lydian. Both measures are marked with a slur.

285

Exercise 285 consists of two measures of eighth-note patterns. The first measure is in the key of E \sharp Lydian, and the second measure is in the key of B \flat Lydian. Both measures are marked with a slur.

295

Exercise 295 consists of two measures of eighth-note patterns. The first measure is in the key of E \sharp Lydian, and the second measure is in the key of B \flat Lydian. Both measures are marked with a slur.

305

Exercise 305 consists of two measures of eighth-note patterns. The first measure is in the key of E \flat Lydian, and the second measure is in the key of B \flat Lydian. A dashed line labeled '8 \flat ' is positioned below the second measure.

315

Exercise 315 consists of two measures of eighth-note patterns. The first measure is in the key of B \flat Lydian, and the second measure is in the key of E \sharp Lydian. Dashed lines labeled '8 \flat ' are positioned below both measures.