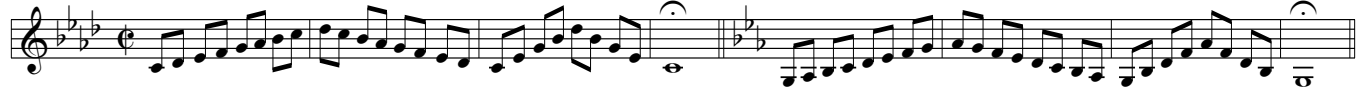


Hveranden dag: Stød •
Every other day: Tongued

Mellemelejet
The mid range

1



9



17



25



33



41



Hveranden dag: Legato (
Every other day: Legato

49



55



61



1

Euphonium $\text{B}\flat$
(Tuba $\text{E}\flat$ / $\text{BB}\flat$)

Smidighed i alle Frygiske tonearter Flexibility in all Phrygian keys

67



73



79



Højden

The high range

Hveranden dag: Legato (

Every other day: Legato

85



91



97



103



109



115



Euphonium $\text{B}\flat$
(Tuba $\text{E}\flat$ / $\text{BB}\flat$)

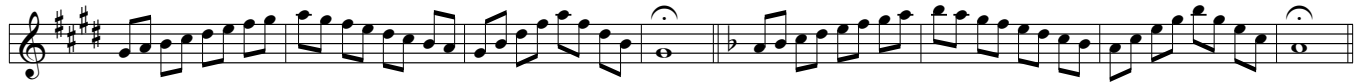
Smidighed i alle Frygiske tonearter
Flexibility in all Phrygian keys

Hveranden dag: Stød •

121 Every other day: Tongued



129



137



145



153



161

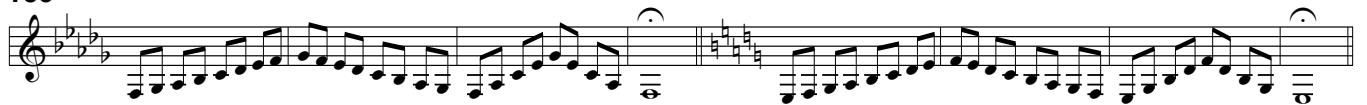


Dybden

Hveranden dag: Stød •

The low range

169 Every other day: Tongued



177



185



Euphonium $\text{B}\flat$
(Tuba $\text{E}\flat$ / $\text{BB}\flat$)

Smidighed i alle Frygiske tonearter
Flexibility in all Phrygian keys

193

Exercise 193: Two measures of eighth notes in Phrygian mode. The first measure is in G major (one sharp), and the second is in G minor (no sharps or flats). A dashed line below the staff is labeled '8vb'.

201

Exercise 201: Two measures of eighth notes in Phrygian mode. The first measure is in F major (no sharps or flats), and the second is in F minor (two flats). A dashed line below the staff is labeled '8vb'.

209

Exercise 209: Two measures of eighth notes in Phrygian mode. The first measure is in E major (two sharps), and the second is in E minor (one sharp). A dashed line below the staff is labeled '8vb'.

Hveranden dag: Legato (
Every other day: Legato

217

Exercise 217: Two measures of eighth notes in Phrygian mode. The first measure is in D major (two sharps), and the second is in D minor (two flats). A slur is placed over the notes.

223

Exercise 223: Two measures of eighth notes in Phrygian mode. The first measure is in C major (no sharps or flats), and the second is in C minor (no sharps or flats). A slur is placed over the notes.

229

Exercise 229: Two measures of eighth notes in Phrygian mode. The first measure is in B major (two sharps), and the second is in B minor (one sharp). A slur is placed over the notes.

235

Exercise 235: Two measures of eighth notes in Phrygian mode. The first measure is in A major (three sharps), and the second is in A minor (no sharps or flats). A dashed line below the staff is labeled '8vb'.

241

Exercise 241: Two measures of eighth notes in Phrygian mode. The first measure is in G major (one sharp), and the second is in G minor (no sharps or flats). A dashed line below the staff is labeled '8vb'.

247

Exercise 247: Two measures of eighth notes in Phrygian mode. The first measure is in F major (no sharps or flats), and the second is in F minor (two flats). A dashed line below the staff is labeled '8vb'.