

## Flexibility in all Phrygian keys

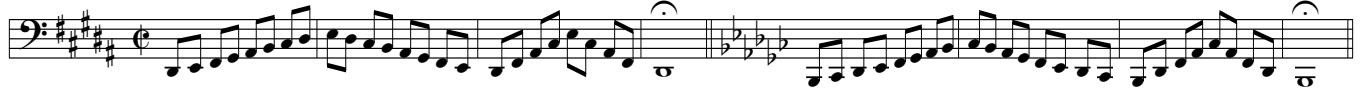
### Mellemløjet

The mid range

Hveranden dag: Stød •

Every other day: Tongued

1



9



17



25



33



41



Hveranden dag: Legato (

Every other day: Legato

49



55



61



1

Tuba in E $\flat$

## Smidighed i alle Frygiske tonearter

Flexibility in all Phrygian keys

67



73



79



## Højden

The high range

Hveranden dag: Legato (

Every other day: Legato

85



91



97



103



109



115



Hveranden dag: Stød •

121 Every other day: Tongued



129



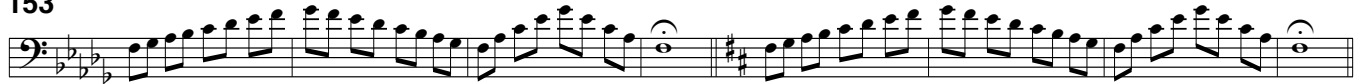
137



145



153



161

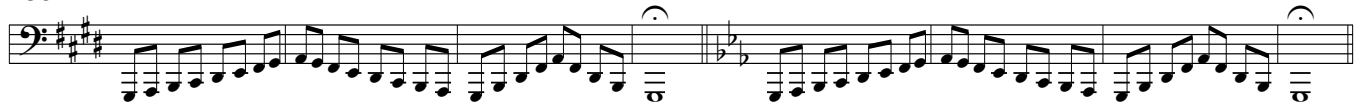


Dybden

Hveranden dag: Stød •

The low range

169 Every other day: Tongued



177



185



# Smidighed i alle Frygiske tonearter

Flexibility in all Phrygian keys

193

Exercise 193: A bass clef staff with a Phrygian key signature (two flats). The exercise consists of two measures of eighth-note runs, followed by a key signature change to a major key (one flat) for the second measure.

201

Exercise 201: A bass clef staff with a Phrygian key signature (three flats). The exercise consists of two measures of eighth-note runs, followed by a key signature change to a major key (one sharp) for the second measure. A dashed line labeled '8vb' is below the second measure.

209

Exercise 209: A bass clef staff with a Phrygian key signature (three flats). The exercise consists of two measures of eighth-note runs, followed by a key signature change to a major key (one flat) for the second measure. Dashed lines labeled '8vb' are below both measures.

## Hveranden dag: Legato (

Every other day: Legato

217

Exercise 217: A bass clef staff with a Phrygian key signature (two sharps). The exercise consists of two measures of eighth-note runs, followed by a key signature change to a major key (two flats) for the second measure. Slurs are placed under the eighth-note runs.

223

Exercise 223: A bass clef staff with a Phrygian key signature (two sharps). The exercise consists of two measures of eighth-note runs, followed by a key signature change to a major key (three flats) for the second measure. Slurs are placed under the eighth-note runs.

229

Exercise 229: A bass clef staff with a Phrygian key signature (two sharps). The exercise consists of two measures of eighth-note runs, followed by a key signature change to a major key (two sharps) for the second measure. Slurs are placed under the eighth-note runs.

235

Exercise 235: A bass clef staff with a Phrygian key signature (two flats). The exercise consists of two measures of eighth-note runs, followed by a key signature change to a major key (two sharps) for the second measure. Slurs are placed under the eighth-note runs.

241

Exercise 241: A bass clef staff with a Phrygian key signature (three flats). The exercise consists of two measures of eighth-note runs, followed by a key signature change to a major key (one sharp) for the second measure. Slurs are placed under the eighth-note runs. A dashed line labeled '8vb' is below the second measure.

247

Exercise 247: A bass clef staff with a Phrygian key signature (three flats). The exercise consists of two measures of eighth-note runs, followed by a key signature change to a major key (one flat) for the second measure. Slurs are placed under the eighth-note runs. Dashed lines labeled '8vb' are below both measures.