

Tuba in BB \flat

Smidighed i alle Frygiske tonearter

Flexibility in all Phrygian keys

67



73



79



Højden

The high range

Hveranden dag: Legato (

Every other day: Legato

85



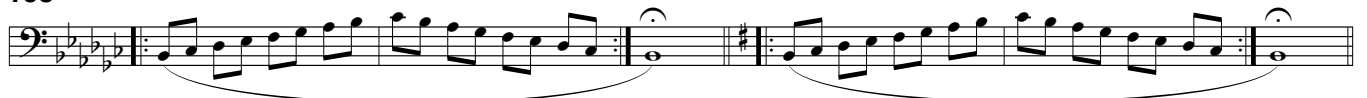
91



97



103



109



115



Hveranden dag: Stød •

Every other day: Tongued

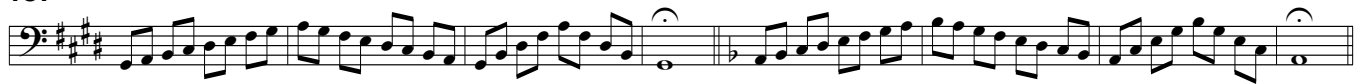
121



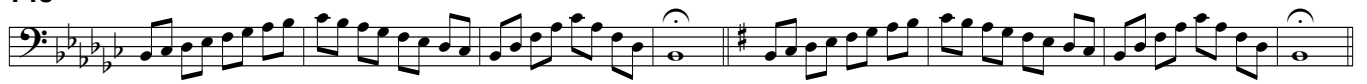
129



137



145



153



161



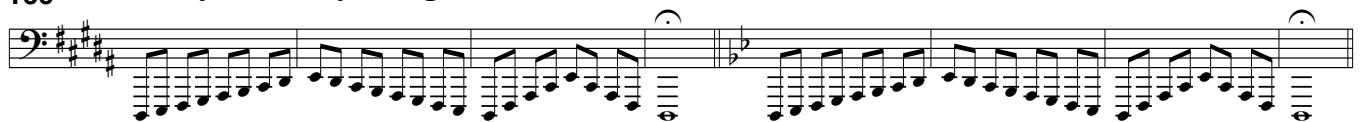
Dybden

Hveranden dag: Stød •

The low range

Every other day: Tongued

169



177



185



193

Exercise 193 consists of two measures of eighth-note runs. The first measure is in the key of B-flat major (Phrygian mode), and the second measure is in the key of D major (Phrygian mode). Both measures feature a descending eighth-note scale starting from the first line of the bass clef. A dashed line labeled '8vb' is positioned below the first measure, and another '8vb' is below the second measure.

201

Exercise 201 consists of two measures of eighth-note runs. The first measure is in the key of B-flat major (Phrygian mode), and the second measure is in the key of D major (Phrygian mode). Both measures feature a descending eighth-note scale starting from the first line of the bass clef. A dashed line labeled '8vb' is positioned below the first measure, and another '8vb' is below the second measure.

209

Exercise 209 consists of two measures of eighth-note runs. The first measure is in the key of B-flat major (Phrygian mode), and the second measure is in the key of D major (Phrygian mode). Both measures feature a descending eighth-note scale starting from the first line of the bass clef. A dashed line labeled '8vb' is positioned below the first measure, and another '8vb' is below the second measure.

Hveranden dag: Legato (

Every other day: Legato

217

Exercise 217 consists of two measures of eighth-note runs. The first measure is in the key of B-flat major (Phrygian mode), and the second measure is in the key of D major (Phrygian mode). Both measures feature a descending eighth-note scale starting from the first line of the bass clef, with a slur over the notes. A dashed line labeled '8vb' is positioned below the first measure, and another '8vb' is below the second measure.

223

Exercise 223 consists of two measures of eighth-note runs. The first measure is in the key of B-flat major (Phrygian mode), and the second measure is in the key of D major (Phrygian mode). Both measures feature a descending eighth-note scale starting from the first line of the bass clef, with a slur over the notes. A dashed line labeled '8vb' is positioned below the first measure, and another '8vb' is below the second measure.

229

Exercise 229 consists of two measures of eighth-note runs. The first measure is in the key of B-flat major (Phrygian mode), and the second measure is in the key of D major (Phrygian mode). Both measures feature a descending eighth-note scale starting from the first line of the bass clef, with a slur over the notes. A dashed line labeled '8vb' is positioned below the first measure, and another '8vb' is below the second measure.

235

Exercise 235 consists of two measures of eighth-note runs. The first measure is in the key of B-flat major (Phrygian mode), and the second measure is in the key of D major (Phrygian mode). Both measures feature a descending eighth-note scale starting from the first line of the bass clef, with a slur over the notes. A dashed line labeled '8vb' is positioned below the first measure, and another '8vb' is below the second measure.

241

Exercise 241 consists of two measures of eighth-note runs. The first measure is in the key of B-flat major (Phrygian mode), and the second measure is in the key of D major (Phrygian mode). Both measures feature a descending eighth-note scale starting from the first line of the bass clef, with a slur over the notes. A dashed line labeled '8vb' is positioned below the first measure, and another '8vb' is below the second measure.

247

Exercise 247 consists of two measures of eighth-note runs. The first measure is in the key of B-flat major (Phrygian mode), and the second measure is in the key of D major (Phrygian mode). Both measures feature a descending eighth-note scale starting from the first line of the bass clef, with a slur over the notes. A dashed line labeled '8vb' is positioned below the first measure, and another '8vb' is below the second measure.