

Euphonium $\text{B}\flat$
(Tuba $\text{E}\flat$ / $\text{BB}\flat$)

Smidighed i alle Lokriske tonearter

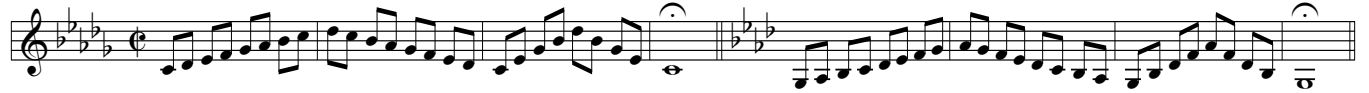
Flexibility in all Locrian keys

Udgivet 2009 af
(Edited 2009 by)
Klaus Bjerre

Hveranden dag: Stød •
Every other day: Tongued

Mellemløjet
The mid range

1



9



17



25



33



41



Hveranden dag: Legato (

49

Every other day: Legato



59



69



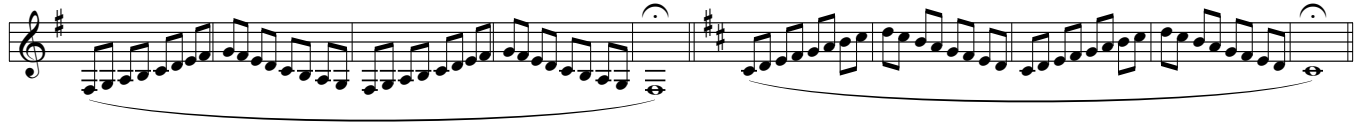
1

Euphonium $\text{B}\flat$
(Tuba $\text{E}\flat$ / $\text{BB}\flat$)

Smidighed i alle Lokriske tonearter

Flexibility in all Locrian keys

79



89



99



Højden

The high range

Hveranden dag: Legato (

Every other day: Legato

109



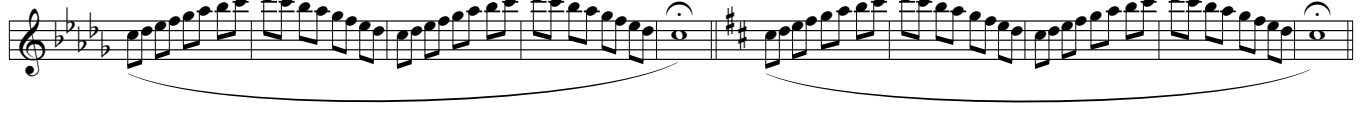
119



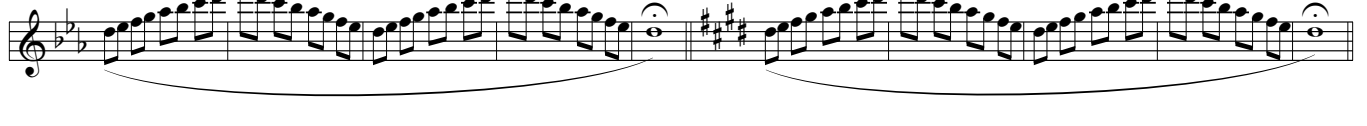
129



139



149



159



Euphonium $\text{B}\flat$
(Tuba $\text{E}\flat$ / $\text{BB}\flat$)

Smidighed i alle Lokriske tonearter
Flexibility in all Locrian keys

Hveranden dag: Stød •

169 Every other day: Tongued



177



185



193



201



209



Dybden

Hveranden dag: Stød •

The low range

217 Every other day: Tongued



225



233



Euphonium $B\flat$
(Tuba $E\flat$ / $BB\flat$)

Smidighed i alle Lokriske tonearter

Flexibility in all Locrian keys

241

Exercise 241 consists of two measures of eighth-note runs. The first measure is in the key of $B\flat$ (Locrian), and the second measure is in the key of $E\flat$ (Locrian). Both measures start with a dotted quarter note followed by eighth notes. A dashed line labeled 8^{th} indicates the eighth-note rhythm.

249

Exercise 249 consists of two measures of eighth-note runs. The first measure is in the key of $B\flat$ (Locrian), and the second measure is in the key of $E\flat$ (Locrian). Both measures start with a dotted quarter note followed by eighth notes. A dashed line labeled 8^{th} indicates the eighth-note rhythm.

257

Exercise 257 consists of two measures of eighth-note runs. The first measure is in the key of $B\flat$ (Locrian), and the second measure is in the key of $E\flat$ (Locrian). Both measures start with a dotted quarter note followed by eighth notes. A dashed line labeled 8^{th} indicates the eighth-note rhythm.

Hveranden dag: Legato (

Every other day: Legato

265

Exercise 265 consists of two measures of legato eighth-note runs. The first measure is in the key of $B\flat$ (Locrian), and the second measure is in the key of $E\flat$ (Locrian). Both measures start with a dotted quarter note followed by eighth notes. A slur is placed under the eighth notes.

275

Exercise 275 consists of two measures of legato eighth-note runs. The first measure is in the key of $B\flat$ (Locrian), and the second measure is in the key of $E\flat$ (Locrian). Both measures start with a dotted quarter note followed by eighth notes. A slur is placed under the eighth notes.

285

Exercise 285 consists of two measures of legato eighth-note runs. The first measure is in the key of $B\flat$ (Locrian), and the second measure is in the key of $E\flat$ (Locrian). Both measures start with a dotted quarter note followed by eighth notes. A slur is placed under the eighth notes.

295

Exercise 295 consists of two measures of eighth-note runs. The first measure is in the key of $B\flat$ (Locrian), and the second measure is in the key of $E\flat$ (Locrian). Both measures start with a dotted quarter note followed by eighth notes. A dashed line labeled 8^{th} indicates the eighth-note rhythm.

305

Exercise 305 consists of two measures of eighth-note runs. The first measure is in the key of $B\flat$ (Locrian), and the second measure is in the key of $E\flat$ (Locrian). Both measures start with a dotted quarter note followed by eighth notes. A dashed line labeled 8^{th} indicates the eighth-note rhythm.

315

Exercise 315 consists of two measures of eighth-note runs. The first measure is in the key of $B\flat$ (Locrian), and the second measure is in the key of $E\flat$ (Locrian). Both measures start with a dotted quarter note followed by eighth notes. A dashed line labeled 8^{th} indicates the eighth-note rhythm.