

Flexibility in all Locrian keys

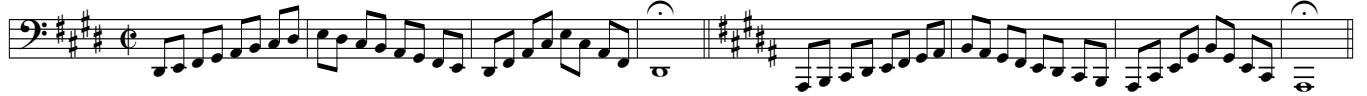
Mellemelejet

The mid range

Hveranden dag: Stød •

Every other day: Tongued

1



9



17



25



33



41



Hveranden dag: Legato (

Every other day: Legato

49



59



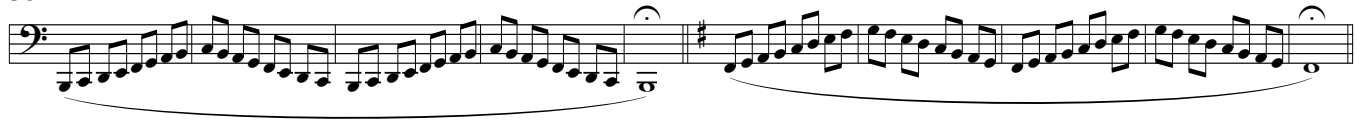
69



79



89



99



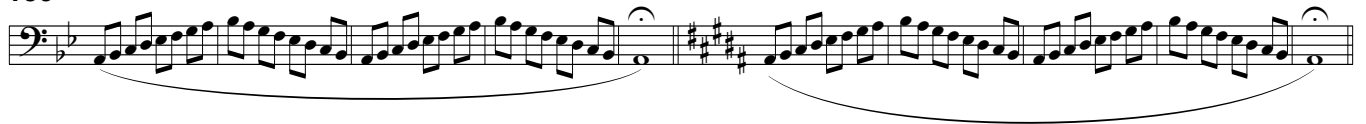
Højden

The high range

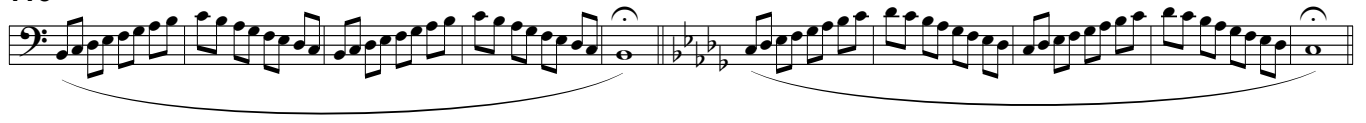
Hveranden dag: Legato (

Every other day: Legato

109



119



129



139



149



159



Hveranden dag: Stød •

169 Every other day: Tongued



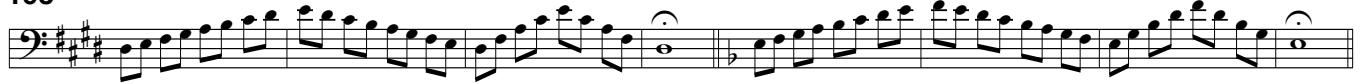
177



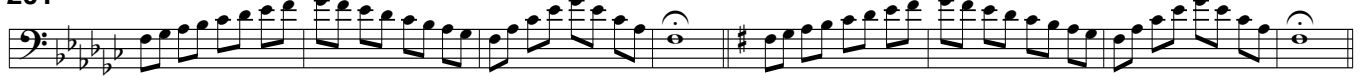
185



193



201



209

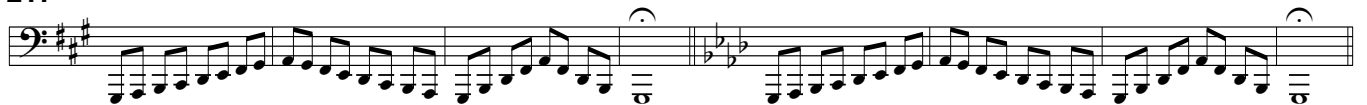


Dybden

Hveranden dag: Stød •

The low range

217 Every other day: Tongued



225



233



241

Exercise 241 consists of two measures of eighth-note patterns. The first measure is in E-flat major (one flat) and the second is in E-flat minor (two flats). Both measures feature a continuous eighth-note line that moves in a stepwise fashion across the staff.

249

Exercise 249 consists of two measures of eighth-note patterns. The first measure is in E-flat major (one flat) and the second is in E-flat minor (two flats). Both measures feature a continuous eighth-note line that moves in a stepwise fashion across the staff. A dashed line labeled '8vb' indicates an octave below the staff.

257

Exercise 257 consists of two measures of eighth-note patterns. The first measure is in E-flat major (one flat) and the second is in E-flat minor (two flats). Both measures feature a continuous eighth-note line that moves in a stepwise fashion across the staff. A dashed line labeled '8vb' indicates an octave below the staff.

Hveranden dag: Legato (

Every other day: Legato

265

Exercise 265 consists of two measures of eighth-note patterns. The first measure is in E-flat major (one flat) and the second is in E-flat minor (two flats). Both measures feature a continuous eighth-note line that moves in a stepwise fashion across the staff, with a slur under the notes.

275

Exercise 275 consists of two measures of eighth-note patterns. The first measure is in E-flat major (one flat) and the second is in E-flat minor (two flats). Both measures feature a continuous eighth-note line that moves in a stepwise fashion across the staff, with a slur under the notes.

285

Exercise 285 consists of two measures of eighth-note patterns. The first measure is in E-flat major (one flat) and the second is in E-flat minor (two flats). Both measures feature a continuous eighth-note line that moves in a stepwise fashion across the staff, with a slur under the notes.

295

Exercise 295 consists of two measures of eighth-note patterns. The first measure is in E-flat major (one flat) and the second is in E-flat minor (two flats). Both measures feature a continuous eighth-note line that moves in a stepwise fashion across the staff, with a slur under the notes.

305

Exercise 305 consists of two measures of eighth-note patterns. The first measure is in E-flat major (one flat) and the second is in E-flat minor (two flats). Both measures feature a continuous eighth-note line that moves in a stepwise fashion across the staff, with a slur under the notes. A dashed line labeled '8vb' indicates an octave below the staff.

315

Exercise 315 consists of two measures of eighth-note patterns. The first measure is in E-flat major (one flat) and the second is in E-flat minor (two flats). Both measures feature a continuous eighth-note line that moves in a stepwise fashion across the staff, with a slur under the notes. A dashed line labeled '8vb' indicates an octave below the staff.