

Mellemelejet

The mid range

Hveranden dag: Stød •

Every other day: Tongued

1

First musical staff with notes and rests.

9

Second musical staff with notes and rests.

17

Third musical staff with notes and rests.

25

Fourth musical staff with notes and rests.

33

Fifth musical staff with notes and rests.

41

Sixth musical staff with notes and rests.

Hveranden dag: Legato (

Every other day: Legato

49

Seventh musical staff with notes and rests, including slurs.

55

Eighth musical staff with notes and rests, including slurs.

61

Ninth musical staff with notes and rests, including slurs.

1

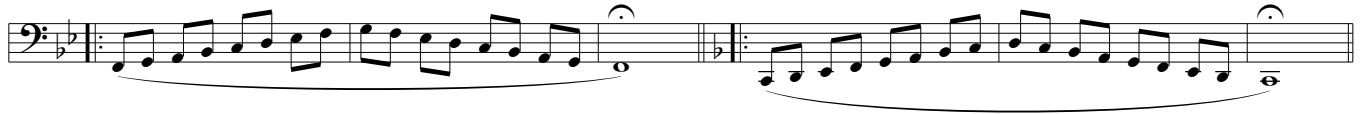
67



73



79



Højden

The high range

Hveranden dag: Legato (

Every other day: Legato

85



91



97



103



109



115



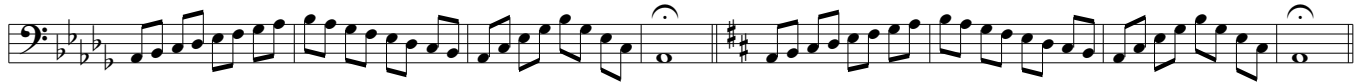
Hveranden dag: Stød •

Every other day: Tongued

121



129



137



145



153



161



Dybden

Hveranden dag: Stød •

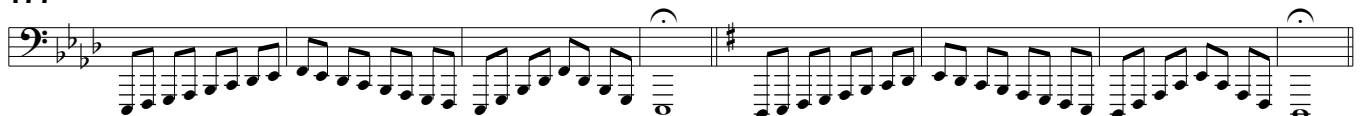
The low range

169

Every other day: Tongued



177



185



193

Exercise 193 consists of two measures of eighth-note patterns. The first measure is in the key of C major (one sharp), and the second measure is in the key of F major (two sharps). Both measures feature a descending eighth-note scale starting from the tonic.

201

Exercise 201 consists of two measures of eighth-note patterns. The first measure is in the key of C major (one sharp), and the second measure is in the key of F major (two sharps). Both measures feature a descending eighth-note scale starting from the tonic. An 8va marking is present below the first measure.

209

Exercise 209 consists of two measures of eighth-note patterns. The first measure is in the key of C major (one sharp), and the second measure is in the key of F major (two sharps). Both measures feature a descending eighth-note scale starting from the tonic. An 8va marking is present below the first measure.

Hveranden dag: Legato (

Every other day: Legato

217

Exercise 217 consists of two measures of eighth-note patterns. The first measure is in the key of C major (one sharp), and the second measure is in the key of F major (two sharps). Both measures feature a descending eighth-note scale starting from the tonic, with a slur under the notes.

223

Exercise 223 consists of two measures of eighth-note patterns. The first measure is in the key of C major (one sharp), and the second measure is in the key of F major (two sharps). Both measures feature a descending eighth-note scale starting from the tonic, with a slur under the notes.

229

Exercise 229 consists of two measures of eighth-note patterns. The first measure is in the key of C major (one sharp), and the second measure is in the key of F major (two sharps). Both measures feature a descending eighth-note scale starting from the tonic, with a slur under the notes.

235

Exercise 235 consists of two measures of eighth-note patterns. The first measure is in the key of C major (one sharp), and the second measure is in the key of F major (two sharps). Both measures feature a descending eighth-note scale starting from the tonic, with a slur under the notes.

241

Exercise 241 consists of two measures of eighth-note patterns. The first measure is in the key of C major (one sharp), and the second measure is in the key of F major (two sharps). Both measures feature a descending eighth-note scale starting from the tonic, with a slur under the notes. An 8va marking is present below the first measure.

247

Exercise 247 consists of two measures of eighth-note patterns. The first measure is in the key of C major (one sharp), and the second measure is in the key of F major (two sharps). Both measures feature a descending eighth-note scale starting from the tonic, with a slur under the notes. An 8va marking is present below the first measure.