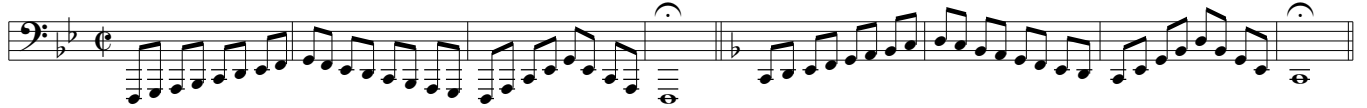


Mellemelejet

Hveranden dag: Stød •

The mid range

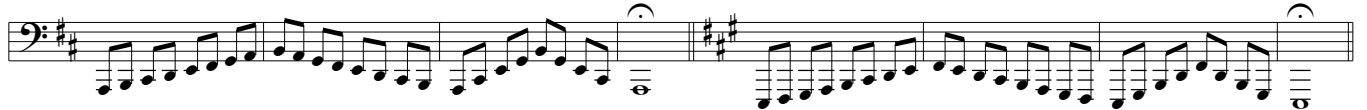
1 Every other day: Tongued



9



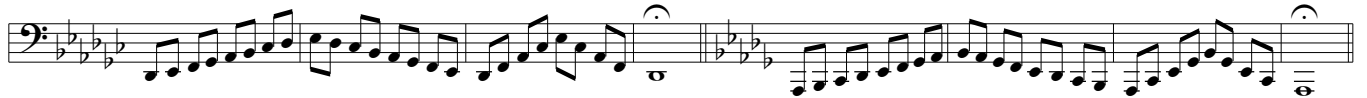
17



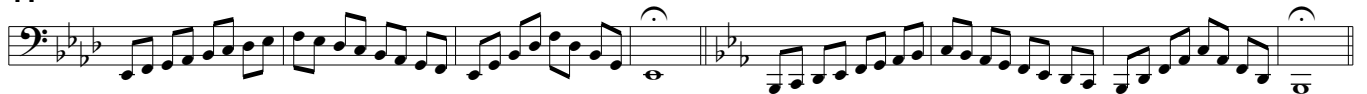
25



33

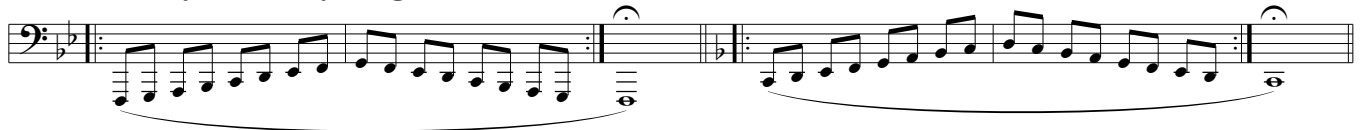


41



Hveranden dag: Legato (

49 Every other day: Legato



55



61



67



73



79



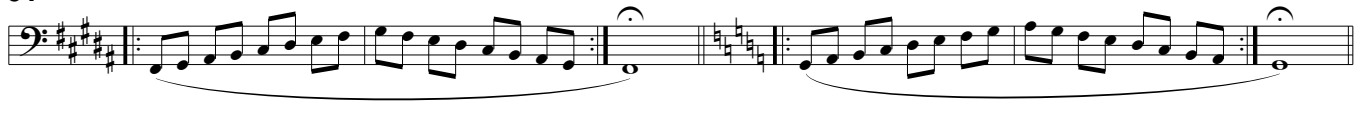
Højden
The high range

Hveranden dag: Legato (
Every other day: Legato

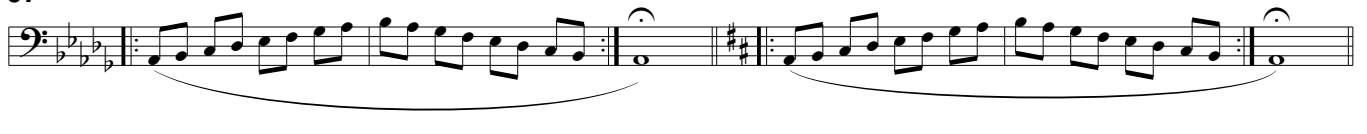
85



91



97



103



109



115



Hveranden dag: Stød •

Every other day: Tongued

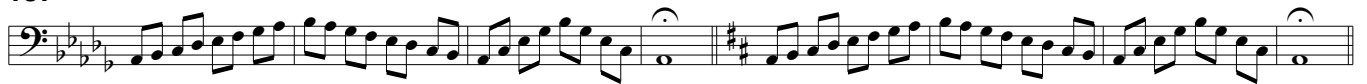
121



129



137



145



153



161



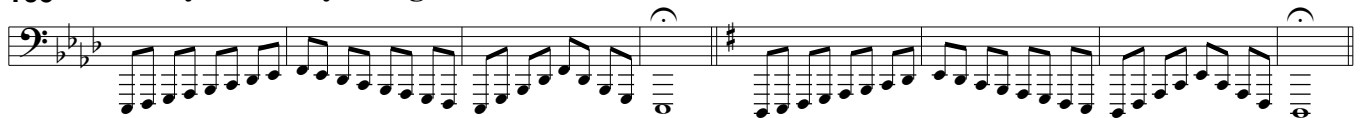
Dybden

Hveranden dag: Stød •

The low range

169

Every other day: Tongued



177



185



193

Exercise 193 consists of two measures of eighth-note patterns. The first measure is in the key of B \flat Mixolydian (one sharp, one flat), and the second measure is in the key of E \flat Mixolydian (two flats). Both measures end with a whole note chord. A dashed line labeled '8 \flat ' indicates the starting position for the tuba.

201

Exercise 201 consists of two measures of eighth-note patterns. The first measure is in the key of D \flat Mixolydian (two flats), and the second measure is in the key of G \flat Mixolydian (three flats). Both measures end with a whole note chord. A dashed line labeled '8 \flat ' indicates the starting position for the tuba.

209

Exercise 209 consists of two measures of eighth-note patterns. The first measure is in the key of C \flat Mixolydian (three flats), and the second measure is in the key of F \flat Mixolydian (four flats). Both measures end with a whole note chord. A dashed line labeled '8 \flat ' indicates the starting position for the tuba.

Hveranden dag: Legato (

Every other day: Legato

217

Exercise 217 consists of two measures of eighth-note patterns. The first measure is in the key of B \flat Mixolydian (one sharp, one flat), and the second measure is in the key of E \flat Mixolydian (two flats). Both measures end with a whole note chord. A dashed line labeled '8 \flat ' indicates the starting position for the tuba.

223

Exercise 223 consists of two measures of eighth-note patterns. The first measure is in the key of D \flat Mixolydian (two flats), and the second measure is in the key of G \flat Mixolydian (three flats). Both measures end with a whole note chord. A dashed line labeled '8 \flat ' indicates the starting position for the tuba.

229

Exercise 229 consists of two measures of eighth-note patterns. The first measure is in the key of C \flat Mixolydian (three flats), and the second measure is in the key of F \flat Mixolydian (four flats). Both measures end with a whole note chord. A dashed line labeled '8 \flat ' indicates the starting position for the tuba.

235

Exercise 235 consists of two measures of eighth-note patterns. The first measure is in the key of B \flat Mixolydian (one sharp, one flat), and the second measure is in the key of E \flat Mixolydian (two flats). Both measures end with a whole note chord. A dashed line labeled '8 \flat ' indicates the starting position for the tuba.

241

Exercise 241 consists of two measures of eighth-note patterns. The first measure is in the key of D \flat Mixolydian (two flats), and the second measure is in the key of G \flat Mixolydian (three flats). Both measures end with a whole note chord. A dashed line labeled '8 \flat ' indicates the starting position for the tuba.

247

Exercise 247 consists of two measures of eighth-note patterns. The first measure is in the key of C \flat Mixolydian (three flats), and the second measure is in the key of F \flat Mixolydian (four flats). Both measures end with a whole note chord. A dashed line labeled '8 \flat ' indicates the starting position for the tuba.