

Flexibility in all melodic Minor keys

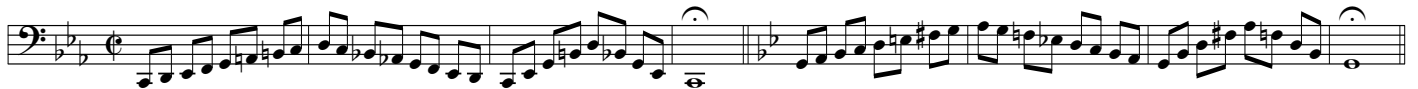
Hveranden dag: Stød •

Every other day: Tongued

Mellemelejet

The mid range

1



67



73



79



Højden

Hveranden dag: Legato (
Every other day: Legato

The high range

85



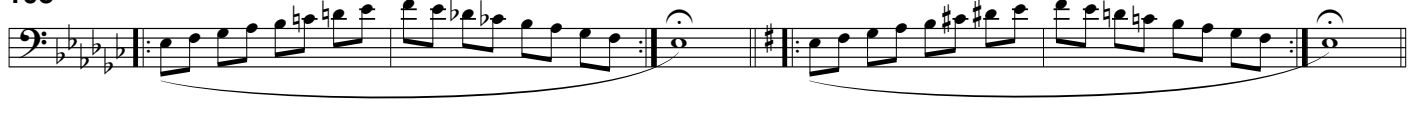
91



97



103



109

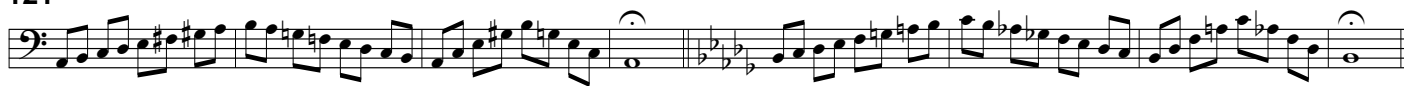


115



Hveranden dag: Stød •

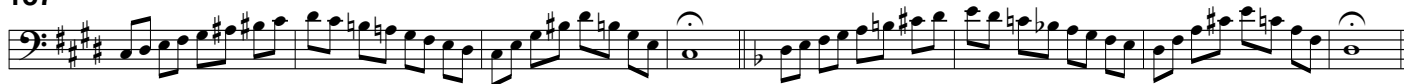
121 Every other day: Tongued



129



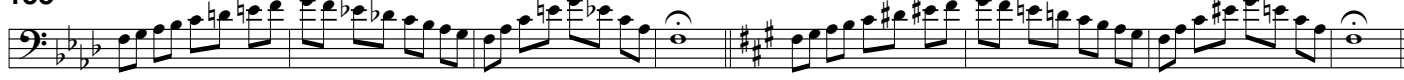
137



145



153



161



Dybden

Hveranden dag: Stød •

The low range

Every other day: Tongued

169



177



185



193

Exercise 193: Two measures of a melodic line in bass clef. The first measure is in E-flat major (one flat), and the second is in E-flat minor (two flats). A dotted line below the staff is labeled '8vb'.

201

Exercise 201: Two measures of a melodic line in bass clef. The first measure is in E-flat major (one flat), and the second is in E-flat minor (two flats). A dotted line below the staff is labeled '8vb'.

209

Exercise 209: Two measures of a melodic line in bass clef. The first measure is in E-flat major (one flat), and the second is in E-flat minor (two flats). A dotted line below the staff is labeled '8vb'.

Hveranden dag: Legato (

Every other day: Legato

217

Exercise 217: Two measures of a legato melodic line in bass clef. The first measure is in E-flat major (one flat), and the second is in E-flat minor (two flats). The notes are connected by a slur.

223

Exercise 223: Two measures of a legato melodic line in bass clef. The first measure is in E-flat major (one flat), and the second is in E-flat minor (two flats). The notes are connected by a slur.

229

Exercise 229: Two measures of a legato melodic line in bass clef. The first measure is in E-flat major (one flat), and the second is in E-flat minor (two flats). The notes are connected by a slur.

235

Exercise 235: Two measures of a legato melodic line in bass clef. The first measure is in E-flat major (one flat), and the second is in E-flat minor (two flats). A dotted line below the staff is labeled '8vb'.

241

Exercise 241: Two measures of a legato melodic line in bass clef. The first measure is in E-flat major (one flat), and the second is in E-flat minor (two flats). A dotted line below the staff is labeled '8vb'.

247

Exercise 247: Two measures of a legato melodic line in bass clef. The first measure is in E-flat major (one flat), and the second is in E-flat minor (two flats). A dotted line below the staff is labeled '8vb'.