

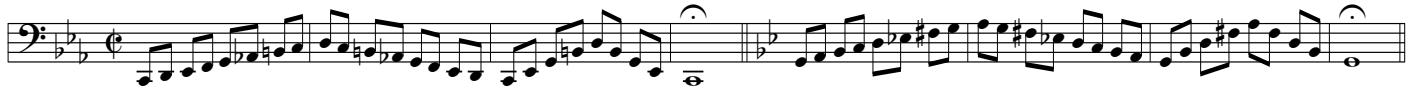
Hveranden dag: Stød •

Mellemløjet

Every other day: Tongued

The mid range

1



9



17



25



33



41



Hveranden dag: Legato (

Every other day: Legato

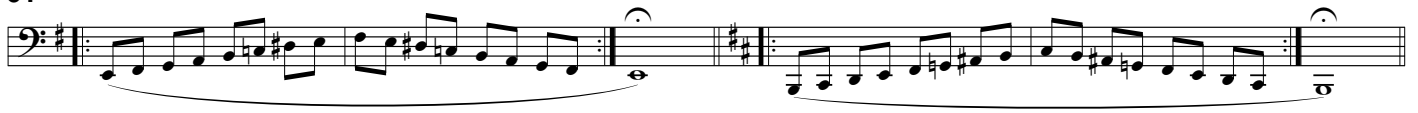
49



55



61



1

67



73



79



Højden

Hveranden dag: Legato (
Every other day: Legato

The high range

85



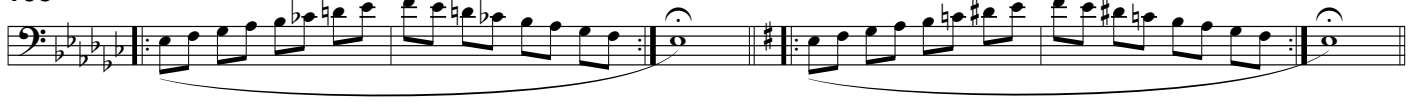
91



97



103



109



115



Hveranden dag: Stød •

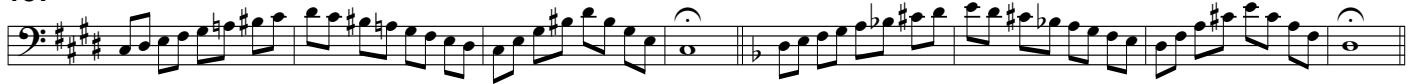
121 Every other day: Tongued



129



137



145



153



161



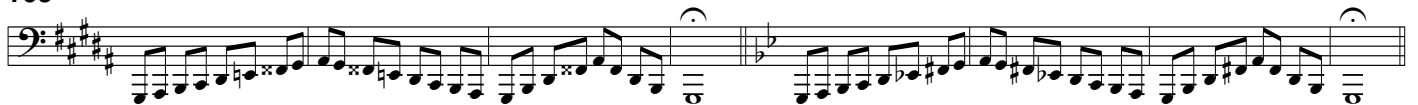
Dybden

Hveranden dag: Stød •

The low range

Every other day: Tongued

169



177



185



193

Exercise 193: Two measures of a bass line. The first measure is in E-flat major (one flat) and the second is in E-flat minor (two flats). The notes are: E-flat, F, G, A-flat, B-flat, C, D, E-flat.

201

Exercise 201: Two measures of a bass line. The first measure is in D-flat major (two flats) and the second is in D-flat minor (three flats). The notes are: D-flat, E-flat, F, G, A-flat, B-flat, C, D-flat.

209

Exercise 209: Two measures of a bass line. The first measure is in C-flat major (three flats) and the second is in C-flat minor (four flats). The notes are: C-flat, D-flat, E-flat, F, G, A-flat, B-flat, C-flat.

Hveranden dag: Legato (

Every other day: Legato

217

Exercise 217: Two measures of a legato bass line. The first measure is in E-flat major and the second is in E-flat minor. The notes are: E-flat, F, G, A-flat, B-flat, C, D, E-flat.

223

Exercise 223: Two measures of a legato bass line. The first measure is in D-flat major and the second is in D-flat minor. The notes are: D-flat, E-flat, F, G, A-flat, B-flat, C, D-flat.

229

Exercise 229: Two measures of a legato bass line. The first measure is in C-flat major and the second is in C-flat minor. The notes are: C-flat, D-flat, E-flat, F, G, A-flat, B-flat, C-flat.

235

Exercise 235: Two measures of a legato bass line. The first measure is in B-flat major and the second is in B-flat minor. The notes are: B-flat, C, D, E, F, G, A, B-flat.

241

Exercise 241: Two measures of a legato bass line. The first measure is in A-flat major and the second is in A-flat minor. The notes are: A-flat, B, C, D, E, F, G, A-flat.

247

Exercise 247: Two measures of a legato bass line. The first measure is in G-flat major and the second is in G-flat minor. The notes are: G-flat, A, B, C, D, E, F, G-flat.