

Clarinet Quartet or ensemble SSS(A)B

Simbol very: Veruju

Two choruses, #8 and 9 from the
Crysostomos liturgy opus 41

Composer: Peter Tchaikovsky 1878
Edited by Klaus Bjerre 2003

Dovol'no skoro (Rather fast)

B \flat Clarinet 1

B \flat Clarinet 2

B \flat Clarinet 3

E \flat Alto Clarinet

B \flat Bass Clarinet

12

Clarinet Quartet or ensemble SSS(A)B

Simbol very: Veruju

Musical score for Clarinet Quartet or ensemble SSS(A)B, measures 23-34. The score is written for four staves in treble clef with a key signature of two sharps (F# and C#). The music features a variety of dynamics including *mf*, *p*, and *ff*. The notation includes eighth and sixteenth notes, rests, and slurs. Measure numbers 23 and 34 are indicated at the beginning and end of the section.

Musical score for Bassbone Music - Postboks 38 - DK 4220 Korsør - K-Bone@mail.dk, measures 23-34. The score is written for four staves in treble clef with a key signature of two sharps (F# and C#). The music features a variety of dynamics including *mf*, *p*, and *ff*. The notation includes eighth and sixteenth notes, rests, and slurs. Measure numbers 23 and 34 are indicated at the beginning and end of the section.

Clarinet Quartet or ensemble SSS(A)B

Simbol very: Veruju

68

83

Clarinet Quartet or ensemble SSS(A)B

Posle Simbola very: Svjat

Skoro (Fast)

Musical score for Clarinet Quartet or ensemble SSS(A)B, Posle Simbola very: Svjat. The score consists of five staves. The first staff is marked *ff* and contains a melodic line with a slur over the first two measures. The second staff is also marked *ff* and contains a similar melodic line. The third staff is marked *ff* and contains a melodic line with a slur over the first two measures. The fourth staff is marked *ff* and contains a melodic line with a slur over the first two measures. The fifth staff is marked *ff* and contains a melodic line with a slur over the first two measures. The key signature is one sharp (F#) and the time signature is 2/4. The score is written in treble clef.

Musical score for Bassbone Music - Postboks 38 - DK 4220 Korsør - K-Bone@mail.dk. The score consists of five staves. The first staff is marked '9' and contains a melodic line with a slur over the first two measures. The second staff is marked '9' and contains a similar melodic line. The third staff is marked '9' and contains a melodic line with a slur over the first two measures. The fourth staff is marked '9' and contains a melodic line with a slur over the first two measures. The fifth staff is marked '9' and contains a melodic line with a slur over the first two measures. The key signature is one sharp (F#) and the time signature is 2/4. The score is written in treble clef.

Clarinet Quartet
or 4-part ensemble

Simbol very: Veruju

Composer: Peter Tchaikovsky 1878
Edited by Klaus Bjerre 2003

Two choruses, ## 8 and 9 from the
Crysostomos liturgy opus 41

B \flat -clarinet 1

Dovol'no skoro (Rather fast)

8

15

22

29

36

43

50

57

f

p

mf

p

mf

mf

p

ff

fff

Taze skorost' (Same tempo)

p

Clarinet Quartet
or 4-part ensemble

Simbol very: Veruju

B \flat -clarinet 1

Musical score for B \flat -clarinet 1, measures 66-88. The score is written in treble clef with a key signature of two sharps (F# and C#). The time signature is 2/4. Measure 66 starts with a treble clef and a key signature of two sharps. The music consists of eighth and sixteenth notes. Measure 75 has a treble clef and a key signature of two sharps. The music consists of eighth and sixteenth notes. Measure 88 has a treble clef and a key signature of two sharps. The music consists of eighth and sixteenth notes. Dynamics include *p*, *mf*, *p*, and *pp*. There are also some rests and a fermata in measure 88.

Posle Simbola very: Svjat

Musical score for Posle Simbola very: Svjat. The score is written in treble clef with a key signature of two sharps (F# and C#). The time signature is common time (C). Measure 1 starts with a treble clef and a key signature of two sharps. The music consists of eighth and sixteenth notes. Measure 8 has a treble clef and a key signature of two sharps. The music consists of eighth and sixteenth notes. Measure 15 has a treble clef and a key signature of two sharps. The music consists of eighth and sixteenth notes. Dynamics include *ff*. There are also some rests and a fermata in measure 15.

Clarinet Quartet
or 4-part ensemble

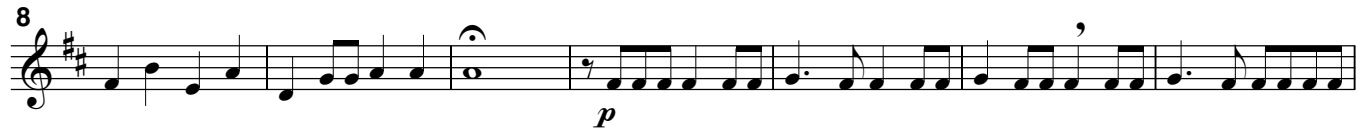
Simbol very: Veruju

Composer: Peter Tchaikovsky 1878
Edited by Klaus Bjerre 2003

Two choruses, ## 8 and 9 from the
Crysostomos liturgy opus 41

B \flat -clarinet 2

Dovol'no skoro (Rather fast)



Taze skorost' (Same tempo) $\bullet = \bullet$



Clarinet Quartet
or 4-part ensemble

Simbol very: Veruju

B \flat -clarinet 2

Musical score for B \flat -clarinet 2, measures 66-94. The score is written in treble clef with a key signature of two sharps (F# and C#). The time signature is 2/4. The piece is in the key of D major. The score consists of three staves of music. The first staff (measures 66-74) features a melodic line with eighth and sixteenth notes, including accents and slurs. The second staff (measures 75-87) continues the melodic line with similar rhythmic patterns and includes a fermata over the final measure. The third staff (measures 88-94) features a dynamic crescendo from *p* to *mf*, followed by a dynamic decrescendo from *p* to *pp*. The piece concludes with a fermata over the final note.

Posle Simbola very: Svjat

Musical score for Posle Simbola very: Svjat, measures 1-13. The score is written in treble clef with a key signature of two sharps (F# and C#). The time signature is common time (C). The piece is in the key of D major. The tempo is marked "Skoro (Fast)". The score consists of three staves of music. The first staff (measures 1-6) begins with a dynamic marking of *ff* and features a melodic line with eighth and sixteenth notes, including accents and slurs. The second staff (measures 7-12) continues the melodic line with similar rhythmic patterns and includes a fermata over the final measure. The third staff (measures 13) features a melodic line with eighth and sixteenth notes, including accents and slurs, and concludes with a fermata over the final note.

Clarinet Quartet
or 4-part ensemble

Simbol very: Veruju

Composer: Peter Tchaikovsky 1878
Edited by Klaus Bjerre 2003

B \flat -clarinet 3

Two choruses, ## 8 and 9 from the
Crysostomos liturgy opus 41

Dovol'no skoro (Rather fast)

8

15

22

29

36

43

50 Taze skorost' (Same tempo)

57

Clarinet Quartet
or 4-part ensemble

Simbol very: Veruju

B \flat -clarinet 3

Musical score for B \flat -clarinet 3, measures 66-92. The score is written in treble clef with a key signature of two sharps (F# and C#). The time signature is 2/4. Measure 66 starts with a treble clef and a key signature of two sharps. The music consists of eighth and sixteenth notes. Measure 75 has a treble clef and a key signature of two sharps. The music consists of eighth and sixteenth notes. Measure 88 has a treble clef and a key signature of two sharps. The music consists of eighth and sixteenth notes. Dynamics include *p*, *mf*, *p*, and *pp*. The piece ends with a double bar line and a fermata over the final note.

Posle Simbola very: Svjat

Musical score for Posle Simbola very: Svjat, measures 1-15. The score is written in treble clef with a key signature of two sharps (F# and C#). The time signature is common time (C). Measure 1 starts with a treble clef and a key signature of two sharps. The music consists of eighth and sixteenth notes. Dynamics include *ff*. Measure 8 has a treble clef and a key signature of two sharps. The music consists of eighth and sixteenth notes. Measure 15 has a treble clef and a key signature of two sharps. The music consists of eighth and sixteenth notes. The piece ends with a double bar line and a fermata over the final note.

Clarinet Quartet
or 4-part ensemble

Simbol very: Veruju

Composer: Peter Tchaikovsky 1878
Edited by Klaus Bjerre 2003

Two choruses, ## 8 and 9 from the
Crysostomos liturgy opus 41

E \flat -alto clarinet

Dovol'no skoro (Rather fast)

1 *f*

9 *p*

16 *mf*

23 *p*

30 *mf* *mf* *p*

37 *ff*

45 *fff*

52 **Taze skorost' (Same tempo)** *p*

61

Clarinet Quartet
or 4-part ensemble

Simbol very: Veruju

E \flat -alto clarinet

Musical score for E \flat -alto clarinet, measures 70-93. The score is in treble clef with a key signature of three sharps (F#, C#, G#). Measure 70 starts with a 2/4 time signature. Measure 81 features a 3/4 time signature change. Measure 93 ends with a double bar line. Dynamics include *p*, *pp*, and a crescendo from *p* to *mf*.

Posle Simbola very: Svjat

Musical score for E \flat -alto clarinet, measures 1-15. The score is in treble clef with a key signature of three sharps (F#, C#, G#). Measure 1 is marked "Skoro (Fast)" and *ff*. Measure 8 starts with a 2/4 time signature. Measure 15 ends with a double bar line.

Clarinet Quartet
or 4-part ensemble

Simbol very: Veruju

Composer: Peter Tchaikovsky 1878
Edited by Klaus Bjerre 2003

B \flat -bass-clarinet

Two choruses, ## 8 and 9 from the
Crysostomos liturgy opus 41

Dovol'no skoro (Rather fast)

1 *f*

8 *p*

15 *mf*

22 *p*

29 *mf* *mf*

36 *p* *ff*

43 *fff*

Taze skorost' (Same tempo) ♩ = ♩

50

58 *p*

Clarinet Quartet
or 4-part ensemble

Simbol very: Veruju

B \flat -bass-clarinet

66

75

88

p *mf* *p* *pp*

Detailed description: This block contains three staves of musical notation for the B \flat -bass-clarinet part. The first staff (measures 66-74) is in 2/4 time with a key signature of two sharps (F# and C#). The second staff (measures 75-87) features a 3/4 time signature change. The third staff (measures 88) concludes with a 3/4 time signature and includes dynamic markings: *p* (piano), *mf* (mezzo-forte), *p* (piano), and *pp* (pianissimo). The notation includes various note values, rests, and articulation marks such as accents and slurs.

Posle Simbola very: Svjat

Skoro (Fast)

8

15

ff

Detailed description: This block contains three staves of musical notation for the B \flat -bass-clarinet part. The first staff (measures 1-7) is in common time (C) with a key signature of two sharps (F# and C#) and is marked "Skoro (Fast)". It begins with a *ff* (fortissimo) dynamic. The second staff (measures 8-14) continues the piece. The third staff (measures 15) concludes with a final note and a double bar line. The notation includes various note values, rests, and articulation marks such as accents and slurs.