

Version for  
single line wind  
instruments

# Cello Suite in G Major BWV 1007

(here in G Major - low octave)

J. S. Bach around 1720

Edited 2012 by

Klaus Smedegaard Bjerre

## Prélude

$\text{♩} = 68$



4



7



10



13



16



19



22



Version for  
single line wind  
instruments

# Cello Suite in G Major BWV 1007

(here in G Major - low octave)

25



28



31



34



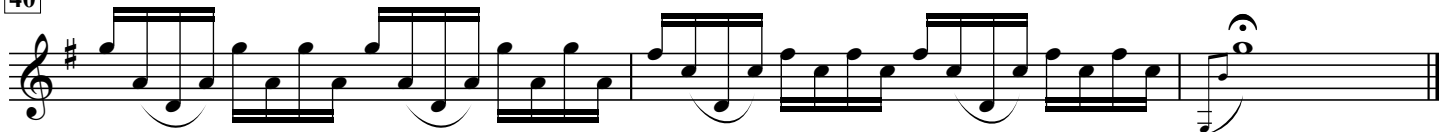
36



38



40



Version for  
single line wind  
instruments

# Cello Suite in G Major BWV 1007

(here in G Major - low octave)

Allemande

The image displays a musical score for the Allemande from the Cello Suite in G Major, BWV 1007, arranged for a single line wind instrument. The score is written in G major and 3/4 time, with a tempo marking of quarter note = 42. The piece consists of 77 measures, with measure numbers 42, 46, 49, 52, 55, 58, 61, 63, 64, 67, 70, and 73 indicated in boxes. The notation includes various rhythmic patterns, slurs, and articulation marks. The key signature is one sharp (F#), and the time signature is 3/4. The score is presented on a single staff with a treble clef.

Version for  
single line wind  
instruments

# Cello Suite in G Major BWV 1007

(here in G Major - low octave)

Courante

♩ = 76

79

83

87

91

93

95

96

99

100

103

105

109

113

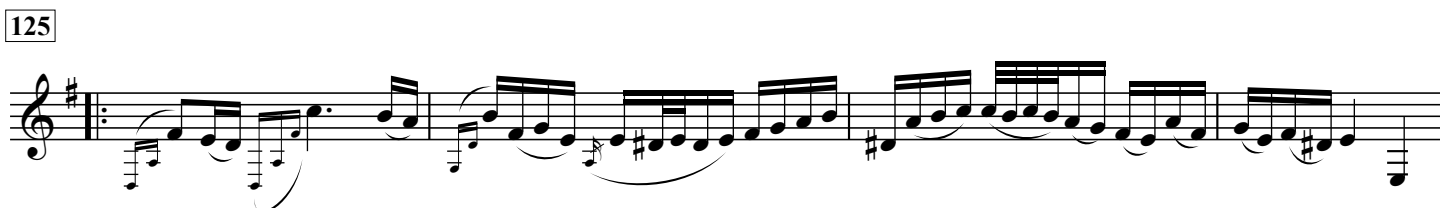
Version for  
single line wind  
instruments

# Cello Suite in G Major BWV 1007

(here in G Major - low octave)

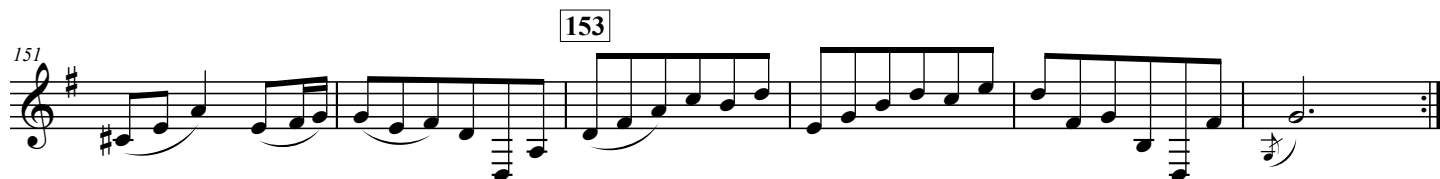
## Sarabande

$\text{♩} = 72$



## Menuet I

$\text{♩} = 88$



Version for  
single line wind  
instruments

# Cello Suite in G Major BWV 1007

(here in G Major - low octave)

**Menuet II**  
♩ = 88

161

165

169

173

177

185

Menuet I da Capo

**Gigue**  
♩ = 80

189

193

197

201

205

209

213