

Version for
single line wind
instruments

Cello Suite in G Major BWV 1007

(Here in E Major - Treble Clef)

J. S. Bach around 1720

Edited 2012 by

Klaus Smedegaard Bjerre

Prélude

♩=68



4



7



10



13



16



19



22



Version for
single line wind
instruments

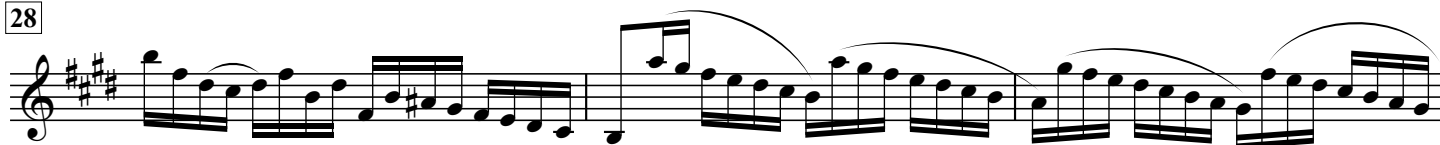
Cello Suite in G Major BWV 1007

(Here in E Major - Treble Clef)

25



28



31



34



36



38



40



Version for
single line wind
instruments

Cello Suite in G Major BWV 1007

(Here in E Major - Treble Clef)

Allemande

The image displays a musical score for the Allemande from the Cello Suite in G Major, BWV 1007, by Johann Sebastian Bach. The score is arranged for a single line wind instrument in E Major. It begins with a treble clef, a key signature of three sharps (F#, C#, G#), and a tempo marking of quarter note = 42. The piece is in 3/4 time. The score consists of ten staves of music, with measure numbers 47, 51, 55, 59, 63, 67, and 71 indicated in boxes. The music features a variety of rhythmic patterns, including eighth and sixteenth notes, and rests. The piece concludes with a double bar line and repeat dots at the end of the final staff.

Version for
single line wind
instruments

Cello Suite in G Major BWV 1007

(Here in E Major - Treble Clef)

Courante
♩ = 76

79

83

87

91 93 95

96 99

100 103

105

109

113

Version for
single line wind
instruments

Cello Suite in G Major BWV 1007

(Here in E Major - Treble Clef)

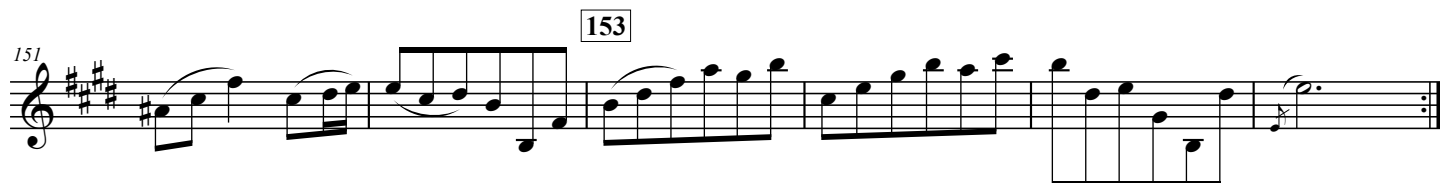
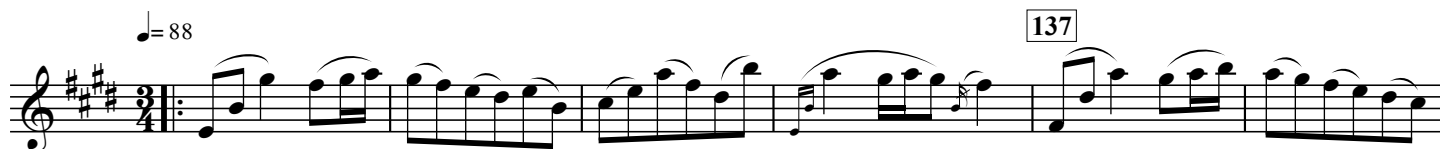
Sarabande

$\text{♩} = 72$



Menuet I

$\text{♩} = 88$



Version for
single line wind
instruments

Cello Suite in G Major BWV 1007

(Here in E Major - Treble Clef)

Menuet II
♩ = 88

161

163

165

169

173

175

177

Menuet I da Capo

Gigue
♩ = 80

185

188

189

193

195

197

201

202

205

208

209

213