

Version for
single line wind
instruments

Cello Suite in G Major BWV 1007

(Here in D \flat Major - Tenor Clef)

J. S. Bach around 1720

Edited 2012 by

Klaus Smedegaard Bjerre

Prélude

$\text{♩} = 68$



4



7



10



13



16



19



22



Version for
single line wind
instruments

Cello Suite in G Major BWV 1007

(Here in D \flat Major - Tenor Clef)

25



28



31



34



36



38



40



Version for
single line wind
instruments

Cello Suite in G Major BWV 1007

(Here in D \flat Major - Tenor Clef)

Allemande

The image displays a musical score for the Allemande from the Cello Suite in G Major, BWV 1007, by Johann Sebastian Bach. The score is arranged for a single line wind instrument in D \flat Major (Tenor Clef). The tempo is marked 'Allemande' with a quarter note equal to 42 (♩=42). The score consists of ten staves of music, with measure numbers 47, 51, 55, 59, 63, 67, 71, and 73 indicated in boxes. The key signature has two flats (B \flat and E \flat), and the time signature is 3/4. The music features a variety of rhythmic patterns, including eighth and sixteenth notes, and rests, with some measures containing slurs and ties.

Version for
single line wind
instruments

Cello Suite in G Major BWV 1007

(Here in D \flat Major - Tenor Clef)

Courante

$\text{♩} = 76$

79

83

87

91

93

95

96

99

100

103

105

109

113

Version for
single line wind
instruments

Cello Suite in G Major BWV 1007

(Here in D \flat Major - Tenor Clef)

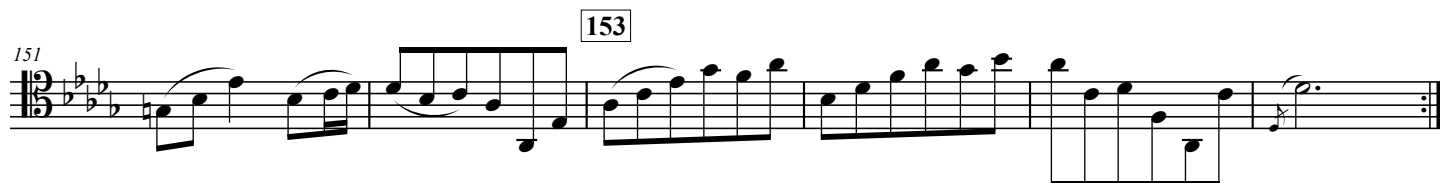
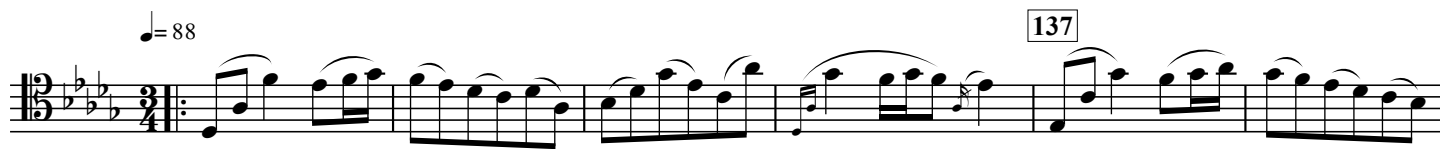
Sarabande

$\text{♩} = 72$



Menuet I

$\text{♩} = 88$



Version for
single line wind
instruments

Cello Suite in G Major BWV 1007

(Here in D \flat Major - Tenor Clef)

Menuet II
♩ = 88

161

163

165

169

173

175

177

Menuet I da Capo

Gigue
♩ = 80

185

188

189

193

195

197

201

202

205

208

209

213