

Version for
single line wind
instruments

Cello Suite in G Major BWV 1007

(here in the original key & octave)

J. S. Bach around 1720

Edited 2012 by

Klaus Smedegaard Bjerre

Prélude

$\text{♩} = 68$



4



7



10



13



16



19



22



Version for
single line wind
instruments

Cello Suite in G Major BWV 1007

(here in the original key & octave)

25



28



31



34



36



38



40



Version for
single line wind
instruments

Cello Suite in G Major BWV 1007

(here in the original key & octave)

Allemande

$\text{♩} = 42$



47



51



59



63



71



Version for
single line wind
instruments

Cello Suite in G Major BWV 1007

(here in the original key & octave)

Courante

$\text{♩} = 76$

79

83

87

91

93

95

96

99

100

103

105

109

113

Version for
single line wind
instruments

Cello Suite in G Major BWV 1007

(here in the original key & octave)

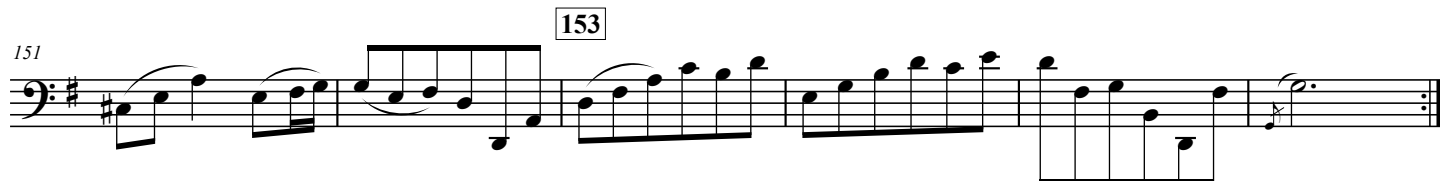
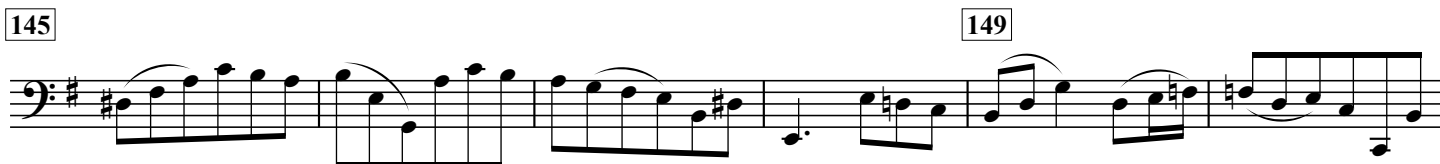
Sarabande

♩ = 72



Menuet I

♩ = 88



Version for
single line wind
instruments

Cello Suite in G Major BWV 1007

(here in the original key & octave)

Menuet II

$\text{♩} = 88$

161

163

165

169

173

175

177

Menuet I da Capo

Detailed description: This block contains the musical notation for Menuet II, measures 161 through 177. The music is written in bass clef with a key signature of one sharp (F#) and a 3/4 time signature. It features a series of eighth and sixteenth notes, often beamed together, with various articulations like slurs and accents. Measure numbers 161, 163, 165, 169, 173, 175, and 177 are indicated in boxes above the staff. The piece concludes with a double bar line and repeat dots. The text 'Menuet I da Capo' is written below the final measure.

Gigue

$\text{♩} = 80$

185

188

189

193

195

197

201

202

205

208

209

213

Detailed description: This block contains the musical notation for the Gigue, measures 185 through 213. The music is written in bass clef with a key signature of one sharp (F#) and a 6/8 time signature. It is characterized by a fast, rhythmic pattern of eighth and sixteenth notes, often beamed together. Measure numbers 185, 188, 189, 193, 195, 197, 201, 202, 205, 208, 209, and 213 are indicated in boxes above the staff. The piece concludes with a double bar line and repeat dots.