

Version for
single line wind
instruments

Cello Suite in G Major BWV 1007

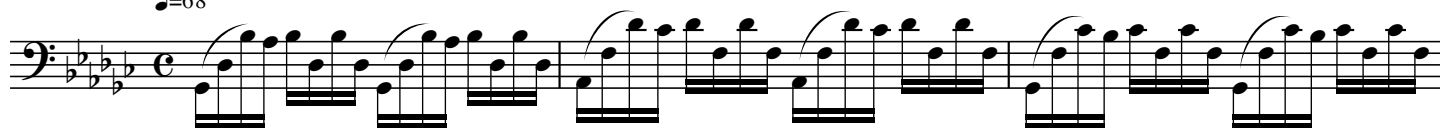
(here in G \flat Major)

J. S. Bach around 1720

Edited 2012 by

Klaus Smedegaard Bjerre

Prélude
♩=68



4



7



10



13



16



19



22



Version for
single line wind
instruments

Cello Suite in G Major BWV 1007

(here in G \flat Major)

25



28



31



34



36



38



40



Version for
single line wind
instruments

Cello Suite in G Major BWV 1007

(here in G \flat Major)

Allemande

$\text{♩} = 42$



47



51



55



59



63



67



71



Version for
single line wind
instruments

Cello Suite in G Major BWV 1007

(here in G \flat Major)

Courante

$\text{♩} = 76$

79

83

87

91

93

95

96

99

100

103

105

109

113

Version for
single line wind
instruments

Cello Suite in G Major BWV 1007

(here in G \flat Major)

Sarabande

$\text{♩} = 72$



121



125



129



Menuet I

$\text{♩} = 88$



137



141



149



151

153

Version for
single line wind
instruments

Cello Suite in G Major BWV 1007

(here in G \flat Major)

Muet II
♩ = 88

161

163

165

169

173

175

177

Menuet I da Capo

Gique
♩ = 80

185

188

189

193

195

197

201

202

205

208

209

213