

Version for
single line wind
instruments

Cello Suite in G Major BWV 1007

(here in C Major)

J. S. Bach around 1720

Edited 2012 by

Klaus Smedegaard Bjerre

Prélude

$\text{♩} = 68$



4



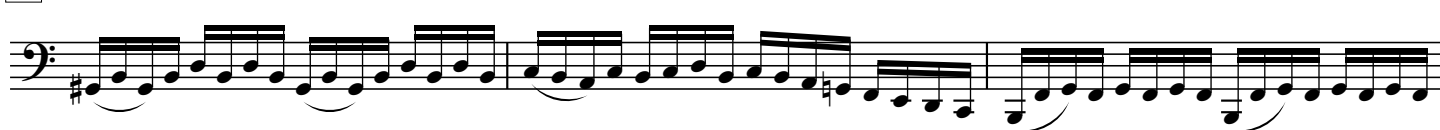
7



10



13



16



19



22



Version for
single line wind
instruments

Cello Suite in G Major BWV 1007

(here in C Major)

25



28



31



34



36



38



40



Version for
single line wind
instruments

Cello Suite in G Major BWV 1007

(here in C Major)

Allemande

$\text{♩} = 42$

The image displays a musical score for the Allemande from the Cello Suite in G Major, BWV 1007, by Johann Sebastian Bach. The score is arranged for single line wind instruments and is presented in C Major. The tempo is marked as $\text{♩} = 42$. The score consists of ten staves of music, each beginning with a measure number in a box: 47, 49, 52, 55, 58, 61, 64, 67, 70, and 73. The music is written in a single bass clef and features a variety of rhythmic patterns, including eighth and sixteenth notes, often beamed together. There are several measures with repeat signs and first/second endings. The key signature is one sharp (F#), which is G major. The score concludes with a double bar line and repeat dots.

Version for
single line wind
instruments

Cello Suite in G Major BWV 1007

(here in C Major)

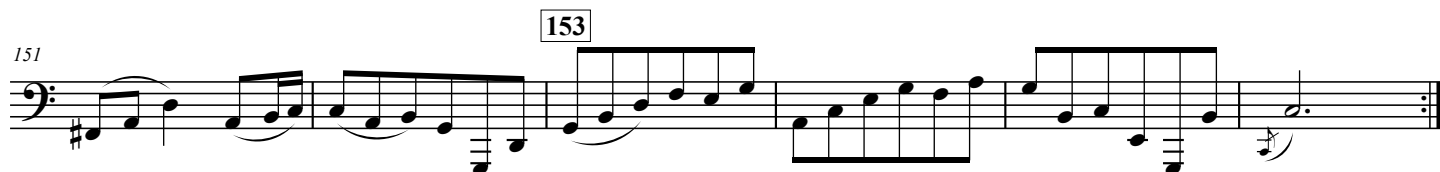
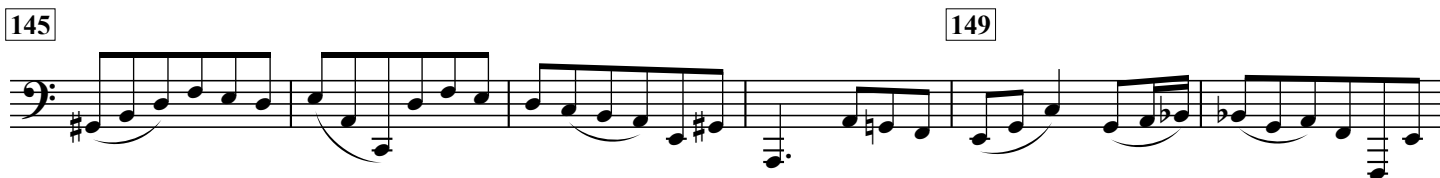
Sarabande

♩ = 72



Menuet I

♩ = 88



Version for
single line wind
instruments

Cello Suite in G Major BWV 1007

(here in C Major)

Menuet II
♩ = 88

161

163

165

169

173

175

177

Menuet I da Capo

Gigue
♩ = 80

185

188

189

193

195

197

201

202

205

208

209

213