

Version for
single line wind
instruments

Cello Suite in G Major BWV 1007

(here in the original key - in the contrabass octave)

J. S. Bach around 1720

Edited 2012 by

Klaus Smedegaard Bjerre

Prélude

♩=68



4



7



10



13



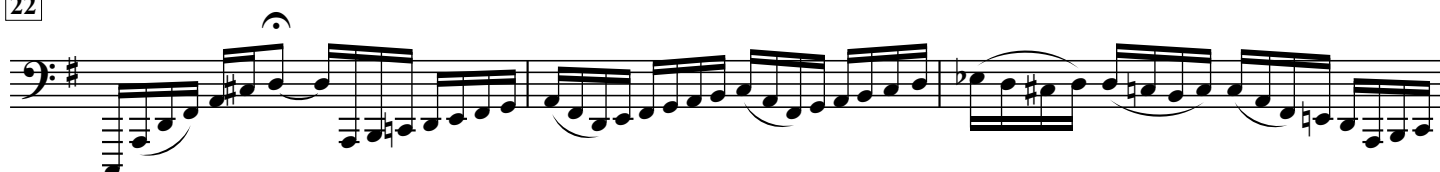
16



19



22



Version for
single line wind
instruments

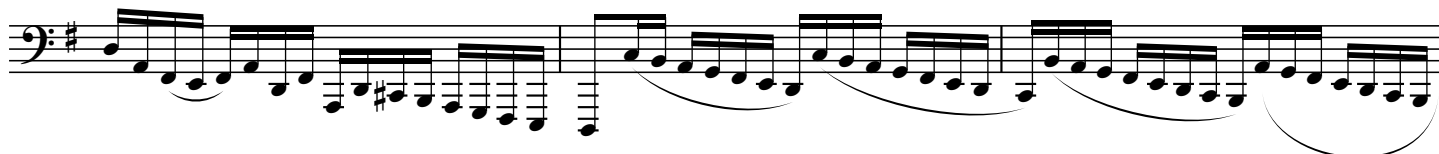
Cello Suite in G Major BWV 1007

(here in the original key - in the contrabass octave)

25



28



31



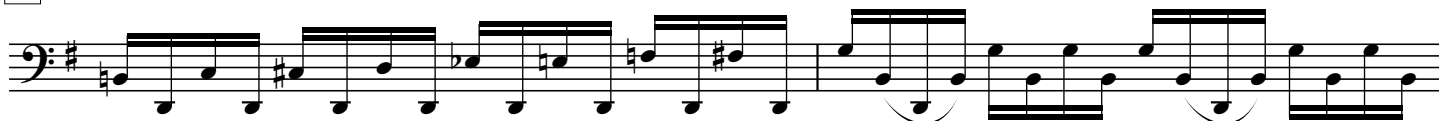
34



36



38



40



Version for
single line wind
instruments

Cello Suite in G Major BWV 1007

(here in the original key - in the contrabass octave)

Allemande

$\text{♩} = 42$

The image displays a musical score for the Allemande from the Cello Suite in G Major, BWV 1007, arranged for single line wind instruments. The score is written in bass clef with a key signature of one sharp (F#) and a common time signature. The tempo is marked as $\text{♩} = 42$. The piece consists of 73 measures, with measure numbers 47, 51, 55, 59, 63, 67, 71, and 73 indicated in boxes. The notation includes various rhythmic values, slurs, and articulation marks. The score is presented on ten staves, with the first staff starting at measure 47 and the final staff ending at measure 73.

Version for
single line wind
instruments

Cello Suite in G Major BWV 1007

(here in the original key - in the contrabass octave)

Courante

$\text{♩} = 76$



79



83



87



91

93

95



99



96

103



100

105



109



113



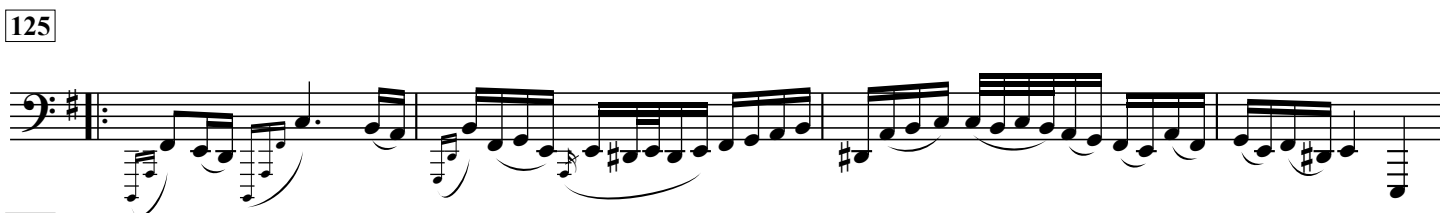
Version for
single line wind
instruments

Cello Suite in G Major BWV 1007

(here in the original key - in the contrabass octave)

Sarabande

♩ = 72



Menuet I

♩ = 88

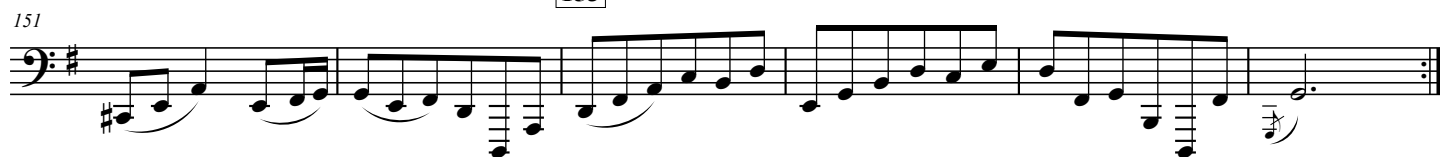
137



141



153



Version for
single line wind
instruments

Cello Suite in G Major BWV 1007

(here in the original key - in the contrabass octave)

Menuet II

161

$\text{♩} = 88$

Measures 161-164 of Menuet II. The music is in G major, 3/4 time, and is written in the contrabass octave. It features a steady eighth-note accompaniment with a melodic line in the upper voice.

165

163

Measures 165-168 of Menuet II. Measure 165 is the start of a new phrase. The piece concludes with a repeat sign at the end of measure 168.

169

173

Measures 169-172 of Menuet II. The music continues with the eighth-note accompaniment and melodic line.

177

175

Measures 175-178 of Menuet II. The piece concludes with a repeat sign at the end of measure 178.

Menuet I da Capo

Gigue

$\text{♩} = 80$

185

Measures 185-188 of Gigue. The music is in G major, 6/8 time, and is written in the contrabass octave. It features a steady eighth-note accompaniment with a melodic line in the upper voice.

189

193

188

Measures 189-192 of Gigue. Measure 189 is the start of a new phrase. The piece concludes with a repeat sign at the end of measure 192.

197

201

195

Measures 195-200 of Gigue. The music continues with the eighth-note accompaniment and melodic line.

205

202

Measures 202-208 of Gigue. The music continues with the eighth-note accompaniment and melodic line.

209

213

208

Measures 209-212 of Gigue. The piece concludes with a repeat sign at the end of measure 212.